

# Pepsinogen II (PG II) Rabbit pAb

货号: AYP17452

## 产品信息

反应	Human,Mouse,Rat
宿主	Rabbit
克隆性	Polyclonal
预测反应	
应用	WB IHC
推荐浓度	<b>WB:</b> 1:500 - 1:2000 <b>IHC:</b> 1:100 - 1:200
理论分子量	34kDa/42kDa
实测分子量	45-50kDa
形式	Liquid
保存条件	Store at -20°C. Avoid freeze / thaw cycles. Buffer: PBS with 0.02% sodium azide,50% glycerol,pH7.3.
偶联物	Unconjugated
阳性对照	Mouse liver,Mouse heart,Rat liver
细胞定位	Secreted
纯化	Affinity purification

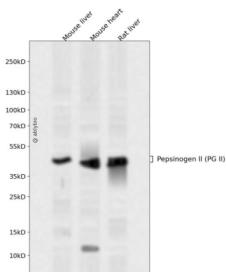
## 抗原信息

抗原信息	A synthetic peptide corresponding to a sequence within amino acids 100-200 of human Pepsinogen II (PG II) (NP_001159896.1).
序列	PSVYCQSQACTSHSRFNPSSESSTYSTNGQTFSLQYGSGLTGFFGYDTLTVQSIQVPNQEFGLSENEPGTNFVYAQFDGI MGLAYPALSVDEATTAMQGMV

## 靶点信息

研究背景	This gene encodes an aspartic proteinase that belongs to the peptidase family A1. The encoded protein is a digestive enzyme that is produced in the stomach and constitutes a major component of the gastric mu cosa. This protein is also secreted into the serum. This protein is synthesized as an inactive zymogen that includes a highly basic prosegment. This enzyme is converted into its active mature form at low pH by sequential cleavage of the prosegment that is carried out by the enzyme itself. Polymorphisms in this gene are associated with susceptibility to gastric cancers. Serum levels of this enzyme are used as a biomarker for certain gastric diseases including Helicobacter pylori related gastritis. Alternate splicing results in multiple transcript variants. A pseudogene of this gene is found on chromosome 1.
基因ID	5225
基因名	PGC
Swiss	P20142
别名	PGC;PEPC;PGII;gastricsin

## 产品验证



Western blot analysis of Pepsinogen II (PG II) expressed in Mouse liver, Mouse heart, Rat liver using Pepsinogen II (PG II) Rabbit pAb at 1:1000. Secondary antibody: HRP Goat Anti-Rabbit IgG (H+L) at 1:5000. Lysates/proteins: 30ug per lane. Blocking buffer: 5% non-fat dry milk in TBST. Detection: ECL Enhanced Kit. Exposure time: 120s.

## 实验步骤

访问官网浏览详情: [www.ablybio.cn](http://www.ablybio.cn)