

SLC18A2 Rabbit pAb

货号: **AYP17449**

产品信息

反应	Human,Mouse,Rat
宿主	Rabbit
克隆性	Polyclonal
预测反应	
应用	WB IHC IF/ICC
推荐浓度	WB: 1:1000 - 1:2000 IHC: 1:50 - 1:200 IF/ICC: 1:50 - 1:200
理论分子量	22kDa/55kDa
实测分子量	56kDa
形式	Liquid
保存条件	Store at -20°C. Avoid freeze / thaw cycles. Buffer: PBS with 0.01% thiomersal,50% glycerol,pH7.3.
偶联物	Unconjugated
阳性对照	HeLa,Mouse lung,Rat stomach
细胞定位	Cytoplasmic vesicle membrane,Multi-pass membrane protein
纯化	Affinity purification

抗原信息

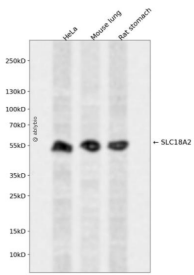
抗原信息	Recombinant fusion protein containing a sequence corresponding to amino acids 50-130 of human SLC18A2 (NP_003045.2).
序列	SIKHEKNATEIQARPVHTASISDSFQSFYSYDNSTMVGTGNATRDLLHQTATQHMVTNASAVPSDCPSEDKDLLNENVQ

靶点信息

研究背景	The vesicular monoamine transporter acts to accumulate cytosolic monoamines into synaptic vesicles, using the proton gradient maintained across the synaptic vesicular membrane. Its proper function is essential to the correct activity of the monoaminergic systems that have been implicated in several human neuropsychiatric disorders. The transporter is a site of action of important drugs, including reserpine and tetra benzazine (summary by Peter et al., 1993 [PubMed 7905859]). See also SLC18A1 (MIM 193002).[supplied by OMIM, Jan 2011]
------	--

基因ID	6571
基因名	SLC18A2
Swiss	Q05940
别名	SLC18A2;SVAT;SVMT;VAT2;VMAT2

产品验证



Western blot analysis of SLC18A2 expressed in HeLa, Mouse lung, Rat stomach using SLC18A2 Rabbit p Ab at 1:1000. Secondary antibody: HRP Goat Anti-Rabbit IgG (H+L) at 1:5000. Lysates/proteins: 30ug per lane. Blocking buffer: 5% non-fat dry milk in TBST. Detection: ECL Enhanced Kit. Exposure time: 12 0s.

实验步骤

访问官网浏览详情: www.ablybio.cn