

ARL2 Rabbit pAb

货号: **AYP17445**

产品信息

反应	Mouse,Rat
宿主	Rabbit
克隆性	Polyclonal
预测反应	
应用	WB
推荐浓度	WB: 1:500 - 1:2000
理论分子量	18kDa/20kDa
实测分子量	21kDa
形式	Liquid
保存条件	Store at -20°C. Avoid freeze / thaw cycles. Buffer: PBS with 0.01% thiomersal,50% glycerol,pH7.3.
偶联物	Unconjugated
阳性对照	Mouse brain,Mouse kidney,Rat brain
细胞定位	Cytoplasm,Mitochondrion intermembrane space,Nucleus,centrosome,cytoskeleton,microtubule organizing center
纯化	Affinity purification

抗原信息

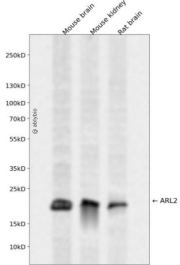
抗原信息	Recombinant fusion protein containing a sequence corresponding to amino acids 1-184 of human ARL2 (NP_001658.2).
序列	MGLLTILKMKKQKERELRLLMLGLDNAGKTTILKKFNGEDIDTISPTLGFNIKLEHRGFKLNIWDVGGQKSLRSYWRNYFE STDGLIWVVDSADRQRMQDCQRELQSLLEERLAGATLLIFANKQDLPALSSNAIREVLELDSIRSHHWCIQGCSAVTGE NLLPGIDWLLDDISSRIFTAD

靶点信息

研究背景	This gene encodes a small GTP-binding protein of the RAS superfamily which functions as an ADP-ribosylation factor (ARF). The encoded protein is one of a functionally distinct group of ARF-like genes.
基因ID	402

基因名	ARL2
Swiss	P36404
别名	ARL2;ARFL2

产品验证



Western blot analysis of ARL2 expressed in Mouse brain, Mouse kidney, Rat brain using ARL2 Rabbit pAb at 1:1000. Secondary antibody: HRP Goat Anti-Rabbit IgG (H+L) at 1:5000. Lysates/proteins: 30ug per lane. Blocking buffer: 5% non-fat dry milk in TBST. Detection: ECL Enhanced Kit. Exposure time: 120s.

实验步骤

访问官网浏览详情: www.ablybio.cn