

CCL3L1 Rabbit pAb

货号: **AYP17442**

产品信息

反应	Human
宿主	Rabbit
克隆性	Polyclonal
预测反应	
应用	WB
推荐浓度	WB: 1:500 - 1:2000
理论分子量	10kDa
实测分子量	12kDa
形式	Liquid
保存条件	Store at -20°C. Avoid freeze / thaw cycles. Buffer: PBS with 0.02% sodium azide, 50% glycerol, pH7.3.
偶联物	Unconjugated
阳性对照	B cells
细胞定位	Secreted
纯化	Affinity purification

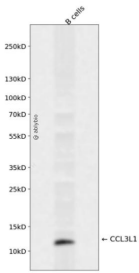
抗原信息

抗原信息	Recombinant fusion protein containing a sequence corresponding to amino acids 24-93 of human CCL3L1 (NP_066286.1).
序列	APLAADTPTACCFYSYTSRQIPQNFIADYFETSSQCSKPSVIFLTKRGRQVCADPSEEWQKYVSDLELSA

靶点信息

研究背景	This gene is one of several cytokine genes that are clustered on the q-arm of chromosome 17. Cytokines are a family of secreted proteins that function in inflammatory and immunoregulatory processes. The protein encoded by this gene binds to several chemokine receptors, including chemokine binding protein 2 and chemokine (C-C motif) receptor 5 (CCR5). CCR5 is a co-receptor for HIV, and binding of this protein to CCR5 inhibits HIV entry. The copy number of this gene varies among individuals, where most individuals have one to six copies, and a minority of individuals have zero or more than six copies. There are conflicting reports about copy number variation of this gene and its correlation to disease susceptibility. This record represents one of two copies that are present on the ALT_REF_LOCI_2 alternate haplotype of the GRCh38 human reference genome assembly. Alternative splicing of this gene results in multiple transcript variants.
基因ID	6349
基因名	
Swiss	P16619
别名	CCL3L1;464.2;D17S1718;G0S19-2;LD78;LD78-beta(1-70);LD78BETA;MIP1AP;SCYA3L;SCYA3L1

产品验证



Western blot analysis of CCL3L1 expressed in B cells using CCL3L1 Rabbit pAb at 1:1000. Secondary antibody: HRP Goat Anti-Rabbit IgG (H+L) at 1:5000. Lysates/proteins: 30ug per lane. Blocking buffer: 5% non-fat dry milk in TBST. Detection: ECL Enhanced Kit. Exposure time: 120s.

实验步骤

访问官网浏览详情: www.ablybio.cn