

EDA Rabbit pAb

货号: **AYP17427**

产品信息

反应	Human,Mouse,Rat
宿主	Rabbit
克隆性	Polyclonal
预测反应	
应用	WB IHC IF/ICC
推荐浓度	WB: 1:100 - 1:500 IHC: 1:50 - 1:200 IF/ICC: 1:50 - 1:200
理论分子量	14kDa/15kDa/40kDa/41kDa
实测分子量	41KDa
形式	Liquid
保存条件	Store at -20°C. Avoid freeze / thaw cycles. Buffer: PBS with 0.01% thiomersal,50% glycerol,pH7.3.
偶联物	Unconjugated
阳性对照	HepG2
细胞定位	Cell membrane,Secreted,Single-pass type II membrane protein
纯化	Affinity purification

抗原信息

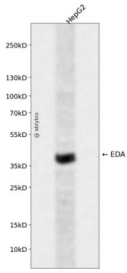
抗原信息	A synthetic peptide corresponding to a sequence within amino acids 750-850 of human EDA (Q92838).
序列	

靶点信息

研究背景	The protein encoded by this gene is a type II membrane protein that can be cleaved by furin to produce a secreted form. The encoded protein, which belongs to the tumor necrosis factor family, acts as a homotrimer and may be involved in cell-cell signaling during the development of ectodermal organs. Defects in this gene are a cause of ectodermal dysplasia, anhidrotic, which is also known as X-linked hypohidrotic ectodermal dysplasia. Several transcript variants encoding many different isoforms have been found for this gene.
------	---

基因ID	1896
基因名	EDA
Swiss	Q92838
别名	EDA;ECTD1;ED1;ED1-A1;ED1-A2;EDA-A1;EDA-A2;EDA1;EDA2;HED;HED1;ODT1;STHAGX1;TNLG7C;XHED;XLHED

产品验证



Western blot analysis of EDA expressed in HepG2 using EDA Rabbit pAb at 1:1000. Secondary antibody: HRP Goat Anti-Rabbit IgG (H+L) at 1:5000. Lysates/proteins: 30ug per lane. Blocking buffer: 5% non-fat dry milk in TBST. Detection: ECL Enhanced Kit. Exposure time: 120s.

实验步骤

访问官网浏览详情: www.ablybio.cn