

# ENPP7 Rabbit pAb

货号: **AYP17424**

## 产品信息

反应	Human
宿主	Rabbit
克隆性	Polyclonal
预测反应	
应用	WB
推荐浓度	<b>WB:</b> 1:500 - 1:2000
理论分子量	51kDa
实测分子量	51kDa
形式	Liquid
保存条件	Store at -20°C. Avoid freeze / thaw cycles. Buffer: PBS with 0.02% sodium azide,50% glycerol,pH7.3.
偶联物	Unconjugated
阳性对照	HepG2
细胞定位	Membrane,Single-pass type I membrane protein
纯化	Affinity purification

## 抗原信息

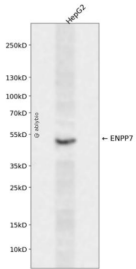
抗原信息	A synthetic peptide corresponding to a sequence within amino acids 250-350 of human ENPP7 (Q6UWV6)
序列	TTVDKragDLVEFHkFPNFTFRDIEFELLDYGPNGMLLPKEGRLEKvyDALKDAHPKLHVYKKEAFPEAFHYANNPRVTPLL MYSDLGYVIHGRINVQFNN

## 靶点信息

研究背景	The protein encoded by this gene is an intestinal alkaline sphingomyelin phosphodiesterase that converts sphingomyelin to ceramide and phosphocholine. The encoded protein is anchored in the cell membrane, and it may function to protect the intestinal mucosa from inflammation and tumorigenesis. This protein is glycosylated and also exhibits lysophosphatidylcholine hydrolase activity.
基因ID	339221

基因名	ENPP7
Swiss	Q6UWV6
别名	ENPP7;ALK-SMase;E-NPP 7;NPP-7;NPP7;E-NPP7

## 产品验证



Western blot analysis of ENPP7 expressed in HepG2 using ENPP7 Rabbit pAb at 1:1000. Secondary antibody: HRP Goat Anti-Rabbit IgG (H+L) at 1:5000. Lysates/proteins: 30ug per lane. Blocking buffer: 5% non-fat dry milk in TBST. Detection: ECL Enhanced Kit. Exposure time: 120s.

## 实验步骤

访问官网浏览详情: [www.ablybio.cn](http://www.ablybio.cn)