

KCNH2 Rabbit pAb

货号: **AYP17409**

产品信息

反应	Human,Mouse
宿主	Rabbit
克隆性	Polyclonal
预测反应	
应用	WB IHC
推荐浓度	WB: 1:500 - 1:2000 IHC: 1:50 - 1:200
理论分子量	60kDa/90kDa/97kDa/115kDa/121kDa/126kDa
实测分子量	148kDa
形式	Liquid
保存条件	Store at -20°C. Avoid freeze / thaw cycles. Buffer: PBS with 0.01% thiomersal,50% glycerol,pH7.3.
偶联物	Unconjugated
阳性对照	293T,SH-SY5Y,SW620,MCF7,K-562,Mouse brain
细胞定位	Cell membrane,Multi-pass membrane protein
纯化	Affinity purification

抗原信息

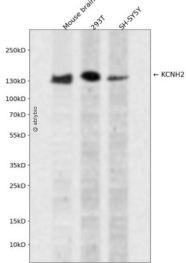
抗原信息	A synthetic peptide corresponding to a sequence within amino acids 850-950 of human KCNH2 (NP_000229.1).
序列	DHFWSSLEITFNLRTDNMIPGSPGSTELEGGFSRQRKRKLSFRRRTDKDTEQPGEVSALGPGRAGAGPSSRGRPGGPWGESPSSGPSSPESEDEGPGRSS

靶点信息

研究背景	This gene encodes a voltage-activated potassium channel belonging to the eag family. It shares sequence similarity with the Drosophila ether-a-go-go (eag) gene. Mutations in this gene can cause long QT syndrome type 2 (LQT2). Transcript variants encoding distinct isoforms have been identified.
基因ID	3757

基因名	KCNH2
Swiss	Q12809
别名	KCNH2;ERG-1;ERG1;H-ERG;HERG;HERG1;Kv11.1;LQT2;SQT1

产品验证



Western blot analysis of KCNH2 expressed in Mouse brain,293T,SH-SY5Y using KCNH2 Rabbit pAb at 1:1000. Secondary antibody: HRP Goat Anti-Rabbit IgG (H+L) at 1:5000. Lysates/proteins: 30ug per lane. Blocking buffer: 5% non-fat dry milk in TBST. Detection: ECL Enhanced Kit. Exposure time: 120s.

实验步骤

访问官网浏览详情: www.ablybio.cn