

KCNC1 Rabbit pAb

货号: **AYP17406**

产品信息

反应	Human,Mouse,Rat
宿主	Rabbit
克隆性	Polyclonal
预测反应	
应用	WB
推荐浓度	WB: 1:100 - 1:500
理论分子量	57kDa/65kDa
实测分子量	58KDa
形式	Liquid
保存条件	Store at -20°C. Avoid freeze / thaw cycles. Buffer: PBS with 0.01% thiomersal,50% glycerol,pH7.3.
偶联物	Unconjugated
阳性对照	Rat liver
细胞定位	Cell membrane,Membrane,Multi-pass membrane protein
纯化	Affinity purification

抗原信息

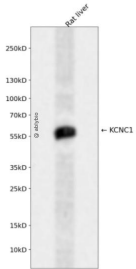
抗原信息	A synthetic peptide corresponding to a sequence within amino acids 1-100 of human KCNC1 (NP_004967.1).
序列	MGQGDESERIVINVGGRHQTYSRSTLRPLPGTRLAWLAEPDAHSHFDYDPRADFFFDRHPGVFAHILNYYRTGKLHCPA DVCGPLYEEELAFWGIDETD

靶点信息

研究背景	This gene encodes a member of a family of integral membrane proteins that mediate the voltage-dependent potassium ion permeability of excitable membranes. Alternative splicing is thought to result in two transcript variants encoding isoforms that differ at their C-termini. These isoforms have had conflicting names in the literature: the longer isoform has been called both 'b' and 'alpha', while the shorter isoform has been called both 'a' and 'beta' (PMIDs 1432046, 12091563).
基因ID	3746

基因名	KCNC1
Swiss	P48547
别名	KCNC1;EPM7;KV3.1;KV4;NGK2

产品验证



Western blot analysis of KCNC1 expressed in Rat liver using KCNC1 Rabbit pAb at 1:1000. Secondary antibody: HRP Goat Anti-Rabbit IgG (H+L) at 1:5000. Lysates/proteins: 30ug per lane. Blocking buffer: 5% non-fat dry milk in TBST. Detection: ECL Enhanced Kit. Exposure time: 120s.

实验步骤

访问官网浏览详情: www.ablybio.cn