

KLF5 Rabbit pAb

货号: **AYP17401**

产品信息

反应	Human,Mouse
宿主	Rabbit
克隆性	Polyclonal
预测反应	
应用	WB IHC
推荐浓度	WB: 1:200 - 1:1000 IHC: 1:50 - 1:200
理论分子量	18kDa/33kDa/41kDa/50kDa
实测分子量	55kDa
形式	Liquid
保存条件	Store at -20°C. Avoid freeze / thaw cycles. Buffer: PBS with 0.05% proclin300,50% glycerol,pH7.3.
偶联物	Unconjugated
阳性对照	U-87MG,HeLa,A-549,HT-1080,HT-29
细胞定位	Nucleus
纯化	Affinity purification

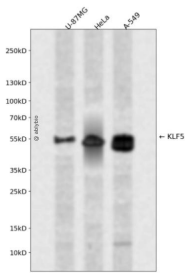
抗原信息

抗原信息	Recombinant fusion protein containing a sequence corresponding to amino acids 1-250 of human KLF5 (N P_001721.2).
序列	MATRVLSMSARLGPVPQPPAPQDEPVFAQLKPVLGAANPARDAALFPGEELKHAHHRPQAQPAPAQAPQPAQPPATGPR LPPEDLVQTRCEMEKYLTPQLPPVPIIPEHKKYRRDSASVVDQFFTDTEGLPYSINMNVFLPDITHLRTGLYKSQRPCVTHIKT EPVAIFSHQSETTAPPPAPTQALPEFTSIFSSHQTAAPEVNINIFIKQELPTPDLHLSVPTQQGHLYQLLNTPDLDMPSSNTQT AAMD

靶点信息

研究背景	This gene encodes a member of the Kruppel-like factor subfamily of zinc finger proteins. The encoded protein is a transcriptional activator that binds directly to a specific recognition motif in the promoters of target genes. This protein acts downstream of multiple different signaling pathways and is regulated by post-translational modification. It may participate in both promoting and suppressing cell proliferation. Expression of this gene may be changed in a variety of different cancers and in cardiovascular disease. Alternative splicing results in multiple transcript variants.
基因ID	688
基因名	KLF5
Swiss	Q13887
别名	KLF5;BTEB2;CKLF;IKLF

产品验证



Western blot analysis of KLF5 expressed in U-87MG, HeLa, A-549 using KLF5 Rabbit pAb at 1:1000. Secondary antibody: HRP Goat Anti-Rabbit IgG (H+L) at 1:5000. Lysates/proteins: 30ug per lane. Blocking buffer: 5% non-fat dry milk in TBST. Detection: ECL Enhanced Kit. Exposure time: 120s.

实验步骤

访问官网浏览详情: www.ablybio.cn