

LRPAP1 Rabbit pAb

货号: **AYP17396**

产品信息

反应	Human,Mouse,Rat
宿主	Rabbit
克隆性	Polyclonal
预测反应	
应用	WB IHC IF/ICC
推荐浓度	WB: 1:500 - 1:2000 IHC: 1:50 - 1:100 IF/ICC: 1:50 - 1:100
理论分子量	41kDa
实测分子量	39kDa
形式	Liquid
保存条件	Store at -20°C. Avoid freeze / thaw cycles. Buffer: PBS with 0.01% thiomersal,50% glycerol,pH7.3.
偶联物	Unconjugated
阳性对照	K-562,THP-1,HepG2
细胞定位	Cell surface,Cytoplasm,Endoplasmic reticulum
纯化	Affinity purification

抗原信息

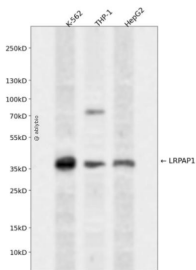
抗原信息	A synthetic peptide corresponding to a sequence within amino acids 100-200 of human LRPAP1 (P30533).
序列	GLDEEDGEKEARLIRLNILNVILAKYGLDGKKDARQVTSNSLSGTQEDGLDDPRLEKLWHKAKTSGKFSGEELDKLWREFLH HKEKVHEYNVLLETLSRTEEIH

靶点信息

研究背景	This gene encodes a protein that interacts with the low density lipoprotein (LDL) receptor-related protein and facilitates its proper folding and localization by preventing the binding of ligands. Mutations in this gene have been identified in individuals with myopia 23. Alternative splicing results in multiple transcript variants.
基因ID	4043

基因名	LRPAP1
Swiss	P30533
别名	LRPAP1;A2MRAP;A2RAP;HBP44;MRAP;MYP23;RAP;alpha-2-MRAP

产品验证



Western blot analysis of LRPAP1 expressed in K-562, THP-1, HepG2 using LRPAP1 Rabbit pAb at 1:1000. Secondary antibody: HRP Goat Anti-Rabbit IgG (H+L) at 1:5000. Lysates/proteins: 30ug per lane. Blocking buffer: 5% non-fat dry milk in TBST. Detection: ECL Enhanced Kit. Exposure time: 120s.

实验步骤

访问官网浏览详情: www.ablybio.cn