

TPM2 Rabbit pAb

货号: **AYP17368**

产品信息

反应	Human,Mouse,Rat
宿主	Rabbit
克隆性	Polyclonal
预测反应	
应用	WB IHC IF/ICC IP
推荐浓度	WB: 1:500 - 1:1000 IHC: 1:50 - 1:100 IF/ICC: 1:50 - 1:100 IP: 1:500 - 1:1000
理论分子量	28kDa/32kDa
实测分子量	36kDa
形式	Liquid
保存条件	Store at -20°C. Avoid freeze / thaw cycles. Buffer: PBS with 0.01% thiomersal,50% glycerol,pH7.3.
偶联物	Unconjugated
阳性对照	SW620,HeLa,MCF7,U-87MG,Mouse skeletal muscle,Mouse lung
细胞定位	Cytoplasm,cytoskeleton
纯化	Affinity purification

抗原信息

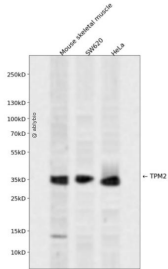
抗原信息	A synthetic peptide corresponding to a sequence within amino acids 300-400 of human TPM2 (P07951).
序列	

靶点信息

研究背景	This gene encodes beta-tropomyosin, a member of the actin filament binding protein family, and mainly expressed in slow, type 1 muscle fibers. Mutations in this gene can alter the expression of other sarcomeric tropomyosin proteins, and cause cap disease, nemaline myopathy and distal arthrogyriposis syndromes . Alternatively spliced transcript variants encoding different isoforms have been found for this gene.
基因ID	7169

基因名	TPM2
Swiss	P07951
别名	TPM2;AMCD1;DA1;DA2B;HEL-S-273;NEM4;TMSB

产品验证



Western blot analysis of TPM2 expressed in Mouse skeletal muscle, SW620, HeLa using TPM2 Rabbit pAb at 1:1000. Secondary antibody: HRP Goat Anti-Rabbit IgG (H+L) at 1:5000. Lysates/proteins: 30ug per lane. Blocking buffer: 5% non-fat dry milk in TBST. Detection: ECL Enhanced Kit. Exposure time: 120s.

实验步骤

访问官网浏览详情: www.ablybio.cn