

# K11-linkage Specific Polyubiquitin Rabbit pAb

货号: AYP17354

## 产品信息

|       |  |
|-------|--|
| 反应    | Human,Mouse,Rat  |
| 宿主    | Rabbit   |
| 克隆性   | Polyclonal   |
| 预测反应  |  |
| 应用    | DB WB  |
| 推荐浓度  | <b>DB:</b> 1:500 - 1:1000<br><b>WB:</b> 1:500 - 1:2000   |
| 理论分子量 |  |
| 实测分子量 | 15-150kD   |
| 形式    | Liquid   |
| 保存条件  | Store at -20°C. Avoid freeze / thaw cycles.<br>Buffer: PBS with 0.01% thiomersal,50% glycerol,pH7.3. |
| 偶联物   | Unconjugated   |
| 阳性对照  | HeLa,RAW264.7,C6,Mouse brain,Mouse kidney  |
| 细胞定位  |  |
| 纯化    | Affinity purification  |

## 抗原信息

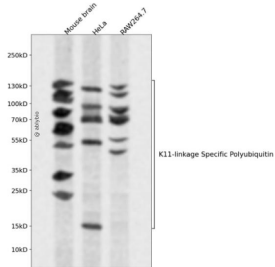
|      |   |
|------|---|
| 抗原信息 | A synthetic peptide corresponding to a sequence containing polyubiquitinated protein (K11 linkage). |
| 序列   |   |

## 靶点信息

|      |   |
|------|---|
| 研究背景 | Polyubiquitination is a posttranslational modification where ubiquitin chains containing isopeptide bonds linking one of seven ubiquitin lysines with the C terminus of an adjoining ubiquitin are covalently attached to proteins. A crystal structure of K11-linked diubiquitin demonstrates a distinct conformation from K48- or K63-linked diubiquitin. It is important that K11-linked ubiquitin chains as critical regulators of mitotic protein degradation. |
| 基因ID |   |
| 基因名  |   |

|              |  |
|--------------|--|
| <b>Swiss</b> |  |
| 别名           |  |

## 产品验证



Western blot analysis of K11-linkage Specific Polyubiquitin expressed in Mouse brain, HeLa, RAW 264.7 using K11-linkage Specific Polyubiquitin Rabbit pAb at 1:1000. Secondary antibody: HRP Goat Anti-Rabbit IgG (H+L) at 1:5000. Lysates/proteins: 30ug per lane. Blocking buffer: 5% non-fat dry milk in TBST. Detection: ECL Enhanced Kit. Exposure time: 120s.

## 实验步骤

访问官网浏览详情: [www.ablybio.cn](http://www.ablybio.cn)