

# TOMM40 Rabbit pAb

货号: **AYP17348**

## 产品信息

反应	Human,Mouse,Rat
宿主	Rabbit
克隆性	Polyclonal
预测反应	
应用	WB IHC IF/ICC
推荐浓度	<b>WB:</b> 1:500 - 1:2000 <b>IHC:</b> 1:50 - 1:200 <b>IF/ICC:</b> 1:50 - 1:200
理论分子量	34kDa/37kDa
实测分子量	38kDa
形式	Liquid
保存条件	Store at -20°C. Avoid freeze / thaw cycles. Buffer: PBS with 0.01% thiomersal,50% glycerol,pH7.3.
偶联物	Unconjugated
阳性对照	U-2OS,HepG2,Mouse brain,Mouse testis,Rat brain
细胞定位	Mitochondrion outer membrane,Multi-pass membrane protein
纯化	Affinity purification

## 抗原信息

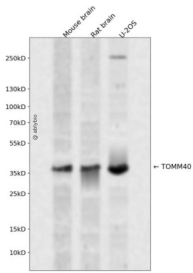
抗原信息	Recombinant fusion protein containing a sequence corresponding to amino acids 1-90 of human TOMM40 (NP_001122389.1).
序列	MGNVLAASSPPAGPPPPAPALVGLPPPPSPPGFTLPPLGGSLGAGTSTSRSSERTPGAATASASGAAEDGACGCLPNP GTFEECHRKC

## 靶点信息

研究背景	The protein encoded by this gene is localized in the outer membrane of the mitochondria. It is the channel-forming subunit of the translocase of the mitochondrial outer membrane (TOM) complex that is essential for import of protein precursors into mitochondria. Alternatively spliced transcript variants have been found for this gene.
------	--

基因ID	10452
基因名	TOMM40
Swiss	O96008
别名	TOMM40;C19orf1;D19S1177E;PER-EC1;PEREC1;TOM40

## 产品验证



Western blot analysis of TOMM40 expressed in Mouse brain,Rat brain,U-2OS using TOMM40 Rabbit pAb at 1:1000. Secondary antibody: HRP Goat Anti-Rabbit IgG (H+L) at 1:5000. Lysates/proteins: 30ug per lane. Blocking buffer: 5% non-fat dry milk in TBST. Detection: ECL Enhanced Kit. Exposure time: 120s.

## 实验步骤

访问官网浏览详情: [www.ablybio.cn](http://www.ablybio.cn)