

ALDH6A1 Rabbit pAb

货号: **AYP17331**

产品信息

反应	Human,Mouse,Rat
宿主	Rabbit
克隆性	Polyclonal
预测反应	
应用	WB IF/ICC
推荐浓度	WB: 1:500 - 1:2000 IF/ICC: 1:50 - 1:200
理论分子量	56kDa/57kDa
实测分子量	58kDa
形式	Liquid
保存条件	Store at -20°C. Avoid freeze / thaw cycles. Buffer: PBS with 0.02% sodium azide,50% glycerol,pH7.3.
偶联物	Unconjugated
阳性对照	HepG2,A-431,SH-SY5Y,22Rv1,MCF7,Mouse liver,Mouse kidney,Rat spinal cord
细胞定位	Mitochondrion
纯化	Affinity purification

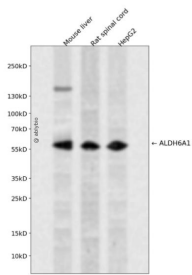
抗原信息

抗原信息	Recombinant fusion protein containing a sequence corresponding to amino acids 326-535 of human ALDH6A1 (NP_005580.1).
序列	VGEAKKWLPELVEHAKNLRVNAGDQPGADLGPLITPQAKERVCNLIDSGTKEGASILLDGRKIKVKGYENGNFVGPTIISNV KPNMTCYKEEIFGPVLVVLETETLDEAIQIVNNNPYNGTAFITNGATARKYAHLVVDVGQVGVNVPIPVPLPMFSFTGSRS SFRGDTNFYQKQGIQFYTLKTTITSQWKEEDATLSSPAVVMPTMGR

靶点信息

研究背景	This gene encodes a member of the aldehyde dehydrogenase protein family. The encoded protein is a mitochondrial methylmalonate semialdehyde dehydrogenase that plays a role in the valine and pyrimidine catabolic pathways. This protein catalyzes the irreversible oxidative decarboxylation of malonate and methylmalonate semialdehydes to acetyl- and propionyl-CoA. Methylmalonate semialdehyde dehydrogenase deficiency is characterized by elevated beta-alanine, 3-hydroxypropionic acid, and both isomers of 3-amino and 3-hydroxyisobutyric acids in urine organic acids. Alternate splicing results in multiple transcript variants.
基因ID	4329
基因名	ALDH6A1
Swiss	Q02252
别名	ALDH6A1;MMSADHA;MMSDH

产品验证



Western blot analysis of ALDH6A1 expressed in Mouse liver, Rat spinal cord, HepG2 using ALDH6A1 Rabbit pAb at 1:1000. Secondary antibody: HRP Goat Anti-Rabbit IgG (H+L) at 1:5000. Lysates/proteins: 30ug per lane. Blocking buffer: 5% non-fat dry milk in TBST. Detection: ECL Enhanced Kit. Exposure time: 120s.

实验步骤

访问官网浏览详情: www.ablybio.cn