

NDUFC2 Rabbit pAb

货号: **AYP17330**

产品信息

反应	Human,Mouse,Rat
宿主	Rabbit
克隆性	Polyclonal
预测反应	
应用	WB
推荐浓度	WB: 1:500 - 1:2000
理论分子量	10kDa/11kDa/13kDa/14kDa
实测分子量	14kDa
形式	Liquid
保存条件	Store at -20°C. Avoid freeze / thaw cycles. Buffer: PBS with 0.01% thiomersal,50% glycerol,pH7.3.
偶联物	Unconjugated
阳性对照	A-549
细胞定位	Matrix side,Mitochondrion inner membrane,Single-pass membrane protein
纯化	Affinity purification

抗原信息

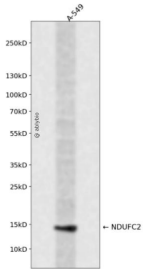
抗原信息	A synthetic peptide corresponding to a sequence within amino acids 1-100 of human NDUFC2 (NP_004540.1).
序列	MIARRNPEPLRFLPDEARSLPPPKLTDPRLLYIGFLGYCSGLIDNLIARRRPIATAGLHRQLLYITAFFFAGYYLVKREDYLYAVRD REMFGYMKLHPEDF

靶点信息

研究背景	Accessory subunit of the mitochondrial membrane respiratory chain NADH dehydrogenase (Complex I, th at is believed not to be involved in catalysis. Complex I functions in the transfer of electrons from NADH t o the respiratory chain. The immediate electron acceptor for the enzyme is believed to be ubiquinone.
基因ID	4718

基因名	NDUFC2
Swiss	O95298
别名	NDUFC2;B14.5b;CI-B14.5b;HLC-1;NADHDH2

产品验证



Western blot analysis of NDUFC2 expressed in A-549 using NDUFC2 Rabbit pAb at 1:1000. Secondary antibody: HRP Goat Anti-Rabbit IgG (H+L) at 1:5000. Lysates/proteins: 30ug per lane. Blocking buffer: 5% non-fat dry milk in TBST. Detection: ECL Enhanced Kit. Exposure time: 120s.

实验步骤

访问官网浏览详情: www.ablybio.cn