

WISP1 Rabbit pAb

货号: **AYP17324**

产品信息

反应	Human,Mouse
宿主	Rabbit
克隆性	Polyclonal
预测反应	
应用	WB
推荐浓度	WB: 1:500 - 1:2000
理论分子量	13kDa/16kDa/21kDa/30kDa/40kDa
实测分子量	45kDa
形式	Liquid
保存条件	Store at -20°C. Avoid freeze / thaw cycles. Buffer: PBS with 0.02% sodium azide,50% glycerol,pH7.3.
偶联物	Unconjugated
阳性对照	293T,A-549,SGC-7901,HeLa,Mouse kidney,Mouse liver
细胞定位	Secreted
纯化	Affinity purification

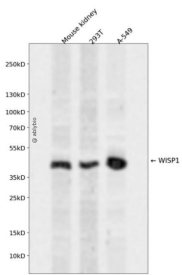
抗原信息

抗原信息	Recombinant fusion protein containing a sequence corresponding to amino acids 158-367 of human WISP 1 (NP_003873.1).
序列	LRVRPPRLWCPHPRRVSIPIGHCCCEQWVCEDDAKRPRKTAPRDTGAFDAVGEVEAWHRNCIAYTSPWSPCSTSCGLGVST RISNVNAQCWPEQESRLCNLRPCDVDIHTLIKAGKKCLAVYQPEASMNFTLAGCISTRSYQPKYCGVCMNDRCCIPYKSKTI DVSFQCPDGLGFSRQVLWINACFCNLSCRNPNDIFADLESYPDFSEIAN

靶点信息

研究背景	This gene encodes a member of the WNT1 inducible signaling pathway (WISP) protein subfamily, which belongs to the connective tissue growth factor (CTGF) family. WNT1 is a member of a family of cysteine-rich, glycosylated signaling proteins that mediate diverse developmental processes. The CTGF family members are characterized by four conserved cysteine-rich domains: insulin-like growth factor-binding domain, von Willebrand factor type C module, thrombospondin domain and C-terminal cystine knot-like domain. This gene may be downstream in the WNT1 signaling pathway that is relevant to malignant transformation. It is expressed at a high level in fibroblast cells, and overexpressed in colon tumors. The encoded protein binds to decorin and biglycan, two members of a family of small leucine-rich proteoglycans present in the extracellular matrix of connective tissue, and possibly prevents the inhibitory activity of decorin and biglycan in tumor cell proliferation. It also attenuates p53-mediated apoptosis in response to DNA damage through activation of the Akt kinase. It is 83% identical to the mouse protein at the amino acid level. Multiple alternatively spliced transcript variants have been identified.
基因ID	8840
基因名	WISP1
Swiss	O95388
别名	WISP1;CCN4;WISP1c;WISP1i;WISP1tc

产品验证



Western blot analysis of WISP1 expressed in Mouse kidney,293T,A-549 using WISP1 Rabbit pAb at 1:1000. Secondary antibody: HRP Goat Anti-Rabbit IgG (H+L) at 1:5000. Lysates/proteins: 30ug per lane. Blocking buffer: 5% non-fat dry milk in TBST. Detection: ECL Enhanced Kit. Exposure time: 120s.

实验步骤

访问官网浏览详情: www.ablybio.cn