

# GULP1 Rabbit pAb

货号: **AYP17315**

## 产品信息

反应	Human,Mouse,Rat
宿主	Rabbit
克隆性	Polyclonal
预测反应	
应用	WB IHC
推荐浓度	<b>WB:</b> 1:500 - 1:2000 <b>IHC:</b> 1:50 - 1:200
理论分子量	19kDa/22kDa/33kDa/34kDa
实测分子量	34kDa
形式	Liquid
保存条件	Store at -20°C. Avoid freeze / thaw cycles. Buffer: PBS with 0.01% thiomersal,50% glycerol,pH7.3.
偶联物	Unconjugated
阳性对照	HT-29,293T,Mouse lung,Rat brain
细胞定位	Cytoplasm
纯化	Affinity purification

## 抗原信息

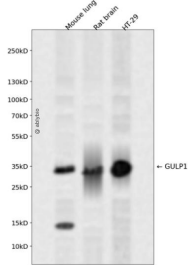
抗原信息	Recombinant fusion protein containing a sequence corresponding to amino acids 1-130 of human GULP1 (NP_057399.1).
序列	MNRAFSRKKDKTWMHTPEALSKHFIPYNAKFLGSTEVEQPKGTEVVRDAVRKCLKFARHIKKSEGQKIPKVELQISIIYGVKILEPKTKEVQHNCQLHRISFCADDKTDKRIFTFICKDSESNKHLCYVFDS

## 靶点信息

研究背景	The protein encoded by this gene is an adapter protein necessary for the engulfment of apoptotic cells by phagocytes. Several transcript variants, some protein coding and some thought not to be protein coding, have been found for this gene.
基因ID	51454

基因名	GULP1
Swiss	Q9UBP9
别名	GULP1;CED-6;CED6;GULP

## 产品验证



Western blot analysis of GULP1 expressed in Mouse lung,Rat brain,HT-29 using GULP1 Rabbit pAb at 1:1000. Secondary antibody: HRP Goat Anti-Rabbit IgG (H+L) at 1:5000. Lysates/proteins: 30ug per lane. Blocking buffer: 5% non-fat dry milk in TBST. Detection: ECL Enhanced Kit. Exposure time: 120s.

## 实验步骤

访问官网浏览详情: [www.ablybio.cn](http://www.ablybio.cn)