

# SYNPO2L Rabbit pAb

货号: **AYP17307**

## 产品信息

反应	Mouse
宿主	Rabbit
克隆性	Polyclonal
预测反应	
应用	<a href="#">WB</a>
推荐浓度	<b>WB:</b> 1:500 - 1:2000
理论分子量	79kDa/102kDa
实测分子量	71kDa
形式	Liquid
保存条件	Store at -20°C. Avoid freeze / thaw cycles. Buffer: PBS with 0.01% thiomersal,50% glycerol,pH7.3.
偶联物	Unconjugated
阳性对照	Mouse heart
细胞定位	Cytoplasm,cytoskeleton
纯化	Affinity purification

## 抗原信息

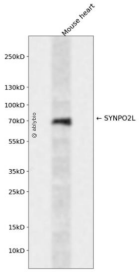
抗原信息	A synthetic peptide corresponding to a sequence within amino acids 700-800 of human SYNPO2L (NP_001107605.1).
序列	HVTPKTPPPMAPKTPPPMTPKTPPPVAPKPPSRGLLDGLVNGAASSAGIPEPPRLQGRGGELFAKRQSRADRYVVEGTPGPGLGPRPRSPSPTPSLPPSWK

## 靶点信息

研究背景	Actin-associated protein that may play a role in modulating actin-based shape.
基因ID	79933
基因名	SYNPO2L

Swiss	Q9H987
别名	SYNPO2L

## 产品验证



Western blot analysis of SYNPO2L expressed in Mouse heart using SYNPO2L Rabbit pAb at 1:1000. Secondary antibody: HRP Goat Anti-Rabbit IgG (H+L) at 1:5000. Lysates/proteins: 30ug per lane. Blocking buffer: 5% non-fat dry milk in TBST. Detection: ECL Enhanced Kit. Exposure time: 120s.

## 实验步骤

访问官网浏览详情: [www.ablybio.cn](http://www.ablybio.cn)