

# SLC25A6 Rabbit pAb

货号: **AYP17302**

## 产品信息

反应	Human,Mouse,Rat
宿主	Rabbit
克隆性	Polyclonal
预测反应	
应用	WB IF/ICC
推荐浓度	<b>WB:</b> 1:500 - 1:1000 <b>IF/ICC:</b> 1:50 - 1:200
理论分子量	32kDa
实测分子量	33KDa
形式	Liquid
保存条件	Store at -20°C. Avoid freeze / thaw cycles. Buffer: PBS with 0.05% proclin300,50% glycerol,pH7.3.
偶联物	Unconjugated
阳性对照	HT-29,293T,K-562,Mouse thymus
细胞定位	Mitochondrion inner membrane,Multi-pass membrane protein
纯化	Affinity purification

## 抗原信息

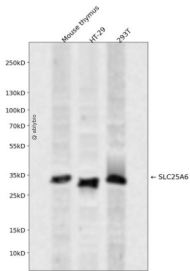
抗原信息	A synthetic peptide corresponding to a sequence within amino acids 100-200 of human SLC25A6 (NP_001627.2).
序列	LGGVDKHTQFWRYFAGNLSGGAAGATSLCFVYPLDFARTRLAADVKGSGTEREFRGLGDCLVKITKSDGIRGLYQGFSVSVQGIIRAAAYFGVYDTAKG

## 靶点信息

研究背景	This gene is a member of the mitochondrial carrier subfamily of solute carrier protein genes. The product of this gene functions as a gated pore that translocates ADP from the cytoplasm into the mitochondrial matrix and ATP from the mitochondrial matrix into the cytoplasm. The protein is implicated in the function of the permeability transition pore complex (PTPC), which regulates the release of mitochondrial products that induce apoptosis. The human genome contains several non-transcribed pseudogenes of this gene.
------	--

基因ID	293
基因名	SLC25A6
Swiss	P12236
别名	SLC25A6;AAC3;ANT;ANT 2;ANT 3;ANT3;ANT3Y;ANT2

## 产品验证



Western blot analysis of SLC25A6 expressed in Mouse thymus, HT-29, 293T using SLC25A6 Rabbit pAb at 1:1000. Secondary antibody: HRP Goat Anti-Rabbit IgG (H+L) at 1:5000. Lysates/proteins: 30ug per lane. Blocking buffer: 5% non-fat dry milk in TBST. Detection: ECL Enhanced Kit. Exposure time: 120s.

## 实验步骤

访问官网浏览详情: [www.ablybio.cn](http://www.ablybio.cn)