

# GUCY2D Rabbit pAb

货号: **AYP17299**

## 产品信息

反应	Human,Mouse,Rat
宿主	Rabbit
克隆性	Polyclonal
预测反应	
应用	WB
推荐浓度	<b>WB:</b> 1:200 - 1:2000
理论分子量	120kDa
实测分子量	95kDa
形式	Liquid
保存条件	Store at -20°C. Avoid freeze / thaw cycles. Buffer: PBS with 0.02% sodium azide,50% glycerol,pH7.3.
偶联物	Unconjugated
阳性对照	Mouse brain,Mouse spinal cord,Mouse kidney
细胞定位	Membrane,Single-pass type I membrane protein
纯化	Affinity purification

## 抗原信息

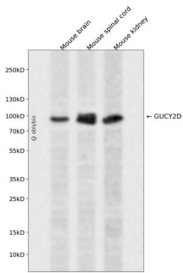
抗原信息	Recombinant fusion protein containing a sequence corresponding to amino acids 52-350 of human GUCY 2D (NP_000171.1).
序列	AVFTVGVLPWACDPIFSRARPDLAARLAAARLNDRDPLAGGPRFEVALLPEPCRTPGSLGAVSSALARVSGLVGPVNPAA CRPAELLAEAEAGIALVPWGPCPWTQAEGTTAPAVTPAADALYALLRAFGWARVALVTAPQDLWVEAGRSLSTALRARGLPV ASVTSMEPLDLGAREALRKVRDGRVAVIMVMHSVLLGGEEQRYLLEAAEELGLTDGSLVFLPFDTIHYALSPGPEALAA LANSSQLRRAHDAVLTLTRHCPSEGSVLDLRRRAQERRELPDLNLQVSPFLFGTI

## 靶点信息

研究背景	This gene encodes a retina-specific guanylate cyclase, which is a member of the membrane guanylyl cyclase family. Like other membrane guanylyl cyclases, this enzyme has a hydrophobic amino-terminal signal sequence followed by a large extracellular domain, a single membrane spanning domain, a kinase homology domain, and a guanylyl cyclase catalytic domain. In contrast to other membrane guanylyl cyclases, this enzyme is not activated by natriuretic peptides. Mutations in this gene result in Leber congenital amaurosis and cone-rod dystrophy-6 diseases.
------	---

基因ID	3000
基因名	GUCY2D
Swiss	Q02846
别名	GUCY2D;CORD5;CORD6;CYGD;GUC1A4;GUC2D;LCA;LCA1;RCD2;RETGC-1;ROS-GC1;ROSGC;retGC

## 产品验证



Western blot analysis of GUCY2D expressed in Mouse brain, Mouse spinal cord, Mouse kidney using GUCY2D Rabbit pAb at 1:1000. Secondary antibody: HRP Goat Anti-Rabbit IgG (H+L) at 1:5000. Lysates/proteins: 30ug per lane. Blocking buffer: 5% non-fat dry milk in TBST. Detection: ECL Enhanced Kit. Exposure time: 120s.

## 实验步骤

访问官网浏览详情: [www.ablybio.cn](http://www.ablybio.cn)