

PKD2 Rabbit pAb

货号: **AYP17297**

产品信息

| | |
|-------|--|
| 反应 | Human,Mouse,Rat |
| 宿主 | Rabbit |
| 克隆性 | Polyclonal |
| 预测反应 | |
| 应用 | WB |
| 推荐浓度 | WB: 1:500 - 1:1000 |
| 理论分子量 | 53kDa/73kDa/98kDa/103kDa/109kDa |
| 实测分子量 | 110kDa |
| 形式 | Liquid |
| 保存条件 | Store at -20°C. Avoid freeze / thaw cycles. Buffer: PBS with 0.01% thiomersal,50% glycerol,pH7.3. |
| 偶联物 | Unconjugated |
| 阳性对照 | 293T,MCF7,Mouse kidney |
| 细胞定位 | Cell projection,Endoplasmic reticulum,Multi-pass membrane protein,cilium membrane |
| 纯化 | Affinity purification |

抗原信息

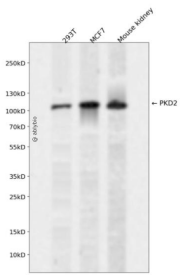
| | |
|------|--|
| 抗原信息 | Recombinant fusion protein containing a sequence corresponding to amino acids 240-410 of human PKD2 (NP_000288.1). |
| 序列 | GMMSSNVYYTRMMSQLFLDTPVSKTEKTNFKTLSSMEDFWKFTEGSLLDGLYWKMQPSNQTEADNRSFIFYENLLLGV PRIRQLRVRNGSCSIPQDLRDEIKECYDVYSVSEDRAPFGPRNGTAWIYTSEKDLNGSSHWGIIATYSGAGYYLDLSRTRE ETAAQVASK |

靶点信息

| | |
|------|---|
| 研究背景 | This gene encodes a member of the polycystin protein family. The encoded protein is a multi-pass membrane protein that functions as a calcium permeable cation channel, and is involved in calcium transport and calcium signaling in renal epithelial cells. This protein interacts with polycystin 1, and they may be partners in a common signaling cascade involved in tubular morphogenesis. Mutations in this gene are associated with autosomal dominant polycystic kidney disease type 2. |
|------|---|

| | |
|-------|--------------------------------|
| 基因ID | 5311 |
| 基因名 | PKD2 |
| Swiss | Q13563 |
| 别名 | PKD2;APKD2;PC2;PKD4;Pc-2;TRPP2 |

产品验证



Western blot analysis of PKD2 expressed in 293T, MCF7, Mouse kidney using PKD2 Rabbit pAb at 1:1000. Secondary antibody: HRP Goat Anti-Rabbit IgG (H+L) at 1:5000. Lysates/proteins: 30ug per lane. Blocking buffer: 5% non-fat dry milk in TBST. Detection: ECL Enhanced Kit. Exposure time: 120s.

实验步骤

访问官网浏览详情: www.ablybio.cn