

CLEC11A Rabbit pAb

货号: **AYP17296**

产品信息

反应	Human,Mouse
宿主	Rabbit
克隆性	Polyclonal
预测反应	
应用	WB
推荐浓度	WB: 1:200 - 1:2000
理论分子量	35kDa
实测分子量	46kDa
形式	Liquid
保存条件	Store at -20°C. Avoid freeze / thaw cycles. Buffer: PBS with 0.02% sodium azide,50% glycerol,pH7.3.
偶联物	Unconjugated
阳性对照	A-549,Jurkat,22Rv1
细胞定位	Cytoplasm,Secreted
纯化	Affinity purification

抗原信息

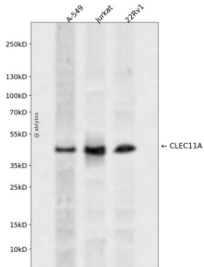
抗原信息	Recombinant fusion protein containing a sequence corresponding to amino acids 22-323 of human CLEC11A (NP_002966.1).
序列	ARGAEREWEGGWGGAQEEEREREALMLKHLQEALGLPAGRGDENPAGTVEGKEDWEMEEDQEEEEEEATPTPSSGP SPSPTPEDIVTYILGRLAGLDAGLHQLHVRLHALDTRVVELTQGLRQLRNAAGDTRDAVQALQEAQGRAEREHGRLEGCL KGLRLGHKCFLLSRDFEAQAAAQARCTARGGSLAQPADRQQMEALTRYLRAALAPYNWPVWLGVHDDRRAEGLYLFENG QRVSFFAWHRSPPELGAQPSASPHLSPDQPNGGTLENCVAQASDDGSWWDHDCQRRLYVCEFPF

靶点信息

研究背景	This gene encodes a member of the C-type lectin superfamily. The encoded protein is a secreted sulfated glycoprotein and functions as a growth factor for primitive hematopoietic progenitor cells. An alternative splice variant has been described but its biological nature has not been determined.
基因ID	6320

基因名	CLEC11A
Swiss	Q9Y240
别名	CLEC11A;CLECSF3;LSLCL;P47;SCGF

产品验证



Western blot analysis of CLEC11A expressed in A-549, Jurkat, 22Rv1 using CLEC11A Rabbit pAb at 1:1000. Secondary antibody: HRP Goat Anti-Rabbit IgG (H+L) at 1:5000. Lysates/proteins: 30ug per lane. Blocking buffer: 5% non-fat dry milk in TBST. Detection: ECL Enhanced Kit. Exposure time: 120s.

实验步骤

访问官网浏览详情: www.ablybio.cn