

# ANO2 Rabbit pAb

货号: **AYP17291**

## 产品信息

反应	Human,Mouse,Rat
宿主	Rabbit
克隆性	Polyclonal
预测反应	
应用	<a href="#">WB</a> <a href="#">IHC</a> <a href="#">IF/ICC</a>
推荐浓度	<b>WB:</b> 1:500 - 1:2000 <b>IHC:</b> 1:50 - 1:100 <b>IF/ICC:</b> 1:50 - 1:100
理论分子量	113kDa
实测分子量	114kDa
形式	Liquid
保存条件	Store at -20°C. Avoid freeze / thaw cycles. Buffer: PBS with 0.01% thiomersal,50% glycerol,pH7.3.
偶联物	Unconjugated
阳性对照	Mouse brain
细胞定位	Cell membrane,Multi-pass membrane protein
纯化	Affinity purification

## 抗原信息

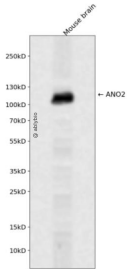
抗原信息	Recombinant fusion protein containing a sequence corresponding to amino acids 1-200 of human ANO2 ( NP_001265526.1).
序列	MPEDIPLLPGSPRRLSPQAGSRGGQGPKHGQQCLKMPGPRAPGLQGGSNRDPGQPCGGESTRSSVINNYLDANEPVS LEARLSRMHFHDSQRKVDYVLAYHYRKRGVHLAQGFPGHSLAIVSNGETGKEPHAGGPGDIELGPLDALEERKEQREEF EHNLM EAGLELEKDLNKSQGSIFVRIHAPWQVLAREAFLK

## 靶点信息

研究背景	ANO2 belongs to a family of calcium-activated chloride channels (CaCCs) (reviewed by Hartzell et al., 2009 [PubMed 19015192]).[supplied by OMIM, Jan 2011]
基因ID	57101

基因名	ANO2
Swiss	Q9NQ90
别名	ANO2;C12orf3;TMEM16B

## 产品验证



Western blot analysis of ANO2 expressed in Mouse brain using ANO2 Rabbit pAb at 1:1000. Secondary antibody: HRP Goat Anti-Rabbit IgG (H+L) at 1:5000. Lysates/proteins: 30ug per lane. Blocking buffer: 5% non-fat dry milk in TBST. Detection: ECL Enhanced Kit. Exposure time: 120s.

## 实验步骤

访问官网浏览详情: [www.ablybio.cn](http://www.ablybio.cn)