

# ATP6V1B2 Rabbit pAb

货号: **AYP17285**

## 产品信息

|       |  |
|-------|--|
| 反应    | Human,Mouse,Rat  |
| 宿主    | Rabbit   |
| 克隆性   | Polyclonal   |
| 预测反应  |  |
| 应用    | WB   |
| 推荐浓度  | <b>WB:</b> 1:500 - 1:2000  |
| 理论分子量 | 56kDa  |
| 实测分子量 | 57kDa  |
| 形式    | Liquid   |
| 保存条件  | Store at -20°C. Avoid freeze / thaw cycles.<br>Buffer: PBS with 0.02% sodium azide,50% glycerol,pH7.3. |
| 偶联物   | Unconjugated   |
| 阳性对照  | K-562,SW620,293T,U-251MG,Mouse kidney,Mouse brain,Rat brain  |
| 细胞定位  | Endomembrane system,Melanosome,Peripheral membrane protein   |
| 纯化    | Affinity purification  |

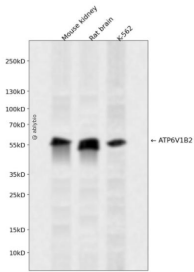
## 抗原信息

|      |  |
|------|--|
| 抗原信息 | Recombinant fusion protein containing a sequence corresponding to amino acids 262-511 of human ATP6V1B2 (NP_001684.2).   |
| 序列   | NLANDPTIERIITPRLALTTAEFLAYQCEKHVLVILTDMSSYAEALREVSAAREEVPGRRGFPGYMYTDLATIYERAGRVEGRN<br>GSITQIPILTMPNDDITHPIPDLTGYITEGQIYVDRQLHNRQIYPPINVLPSLSRLMKSAGEGMTRKDHADVSNQLYACYAIG<br>KDVQAMKAVVGEEALTSDDLLEYLFLQKFERNFIAQGPYENRTVFETLDIGWQLLRIFPKEMLKRIQSTLSEFYPRDSAKH |

## 靶点信息

|       |  |
|-------|--|
| 研究背景  | This gene encodes a component of vacuolar ATPase (V-ATPase), a multisubunit enzyme that mediates acidification of eukaryotic intracellular organelles. V-ATPase dependent organelle acidification is necessary for such intracellular processes as protein sorting, zymogen activation, receptor-mediated endocytosis, and synaptic vesicle proton gradient generation. V-ATPase is composed of a cytosolic V1 domain and a transmembrane V0 domain. The V1 domain consists of three A, three B, and two G subunits, as well as a C, D, E, F, and H subunit. The V1 domain contains the ATP catalytic site. The protein encoded by this gene is one of two V1 domain B subunit isoforms and is the only B isoform highly expressed in osteoclasts. |
| 基因ID  | 526  |
| 基因名   | ATP6V1B2   |
| Swiss | P21281   |
| 别名    | ATP6V1B2;ATP6B1B2;ATP6B2;DOOD;HO57;VATB;VPP3;Vma2;ZLS2   |

## 产品验证



Western blot analysis of ATP6V1B2 expressed in Mouse kidney, Rat brain, K-562 using ATP6V1B2 Rabbit pAb at 1:1000. Secondary antibody: HRP Goat Anti-Rabbit IgG (H+L) at 1:5000. Lysates/proteins: 30ug per lane. Blocking buffer: 5% non-fat dry milk in TBST. Detection: ECL Enhanced Kit. Exposure time: 12 0s.

## 实验步骤

访问官网浏览详情: [www.ablybio.cn](http://www.ablybio.cn)