

# CPA1 Rabbit pAb

货号: **AYP17276**

## 产品信息

反应	Human,Mouse,Rat
宿主	Rabbit
克隆性	Polyclonal
预测反应	
应用	WB IF/ICC
推荐浓度	<b>WB:</b> 1:500 - 1:1000 <b>IF/ICC:</b> 1:50 - 1:200
理论分子量	47kDa
实测分子量	45KDa
形式	Liquid
保存条件	Store at -20°C. Avoid freeze / thaw cycles. Buffer: PBS with 0.05% proclin300,50% glycerol,pH7.3.
偶联物	Unconjugated
阳性对照	Mouse pancreas,Mouse spleen,Mouse brain,Rat pancreas
细胞定位	Secreted
纯化	Affinity purification

## 抗原信息

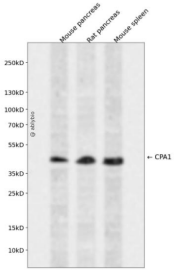
抗原信息	A synthetic peptide corresponding to a sequence within amino acids 1-100 of human CPA1 (NP_001859.1).
序列	MRGLLVLSVLLGAVFGKEDFVGHQVLRISVADEAQVQKVELEDLEHLQLDFWRGPAHPGSPIDVRVPFPSIQAVKIFLES HGISYETMIEDVQSLLDEE

## 靶点信息

研究背景	This gene encodes a member of the carboxypeptidase A family of zinc metalloproteases. This enzyme is produced in the pancreas and preferentially cleaves C-terminal branched-chain and aromatic amino acids from dietary proteins. This gene and several family members are present in a gene cluster on chromosome 7. Mutations in this gene may be linked to chronic pancreatitis, while elevated protein levels may be associated with pancreatic cancer.
------	--

基因ID	1357
基因名	CPA1
Swiss	P15085
别名	CPA1;CPA

## 产品验证



Western blot analysis of CPA1 expressed in Mouse pancreas, Rat pancreas, Mouse spleen using CPA1 Rabbit pAb at 1:1000. Secondary antibody: HRP Goat Anti-Rabbit IgG (H+L) at 1:5000. Lysates/proteins: 30ug per lane. Blocking buffer: 5% non-fat dry milk in TBST. Detection: ECL Enhanced Kit. Exposure time: 120s.

## 实验步骤

访问官网浏览详情: [www.ablybio.cn](http://www.ablybio.cn)