

CRYM Rabbit pAb

货号: **AYP17275**

产品信息

反应	Human,Mouse,Rat
宿主	Rabbit
克隆性	Polyclonal
预测反应	
应用	WB
推荐浓度	WB: 1:500 - 1:2000
理论分子量	33kDa
实测分子量	36kDa
形式	Liquid
保存条件	Store at -20°C. Avoid freeze / thaw cycles. Buffer: PBS with 0.02% sodium azide,50% glycerol,pH7.3.
偶联物	Unconjugated
阳性对照	A-549,HepG2,Jurkat,Mouse brain,Mouse kidney,Rat brain
细胞定位	Cytoplasm
纯化	Affinity purification

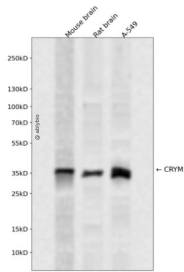
抗原信息

抗原信息	Recombinant fusion protein containing a sequence corresponding to amino acids 1-314 of human CRYM (NP_001879.1).
序列	MSRVPAFLSAAEVEEHLRSSLLIPPLETALANFSSGPEGGVMQPVRTVVPVTKHRGYLGVMPAYSAEEDALTTKLVTFYED RGITSVVPSHQATVLLFEPSTNGTLLAVMDGNVITAKRTAAVSAIATKFLKPPSSEVLCILGAGVQAYSHYEIFTEQFSFKEVRI WNRTKENAEKFADTVQGEVRCSSVQEAVAGADVIITVTLATEPILFGEWVKPGAHINAVGASRPDWRELDDELMKEAVL YVDSQEAAALKESGDVLLSGAEIFAELGEVIKGVKPAHCEKTTVFKSLGMAVEDTVAAKLIYDSWSSGK

靶点信息

研究背景	Crystallins are separated into two classes: taxon-specific and ubiquitous. The former class is also called phylogenetically-restricted crystallins. The latter class constitutes the major proteins of vertebrate eye lens and maintains the transparency and refractive index of the lens. This gene encodes a taxon-specific crystallin protein that binds NADPH and has sequence similarity to bacterial ornithine cyclodeaminases. The encoded protein does not perform a structural role in lens tissue, and instead it binds thyroid hormone for possible regulatory or developmental roles. Mutations in this gene have been associated with autosomal dominant non-syndromic deafness.
基因ID	1428
基因名	CRYM
Swiss	Q14894
别名	CRYM;DFNA40;THBP

产品验证



Western blot analysis of CRYM expressed in Mouse brain, Rat brain, A-549 using CRYM Rabbit pAb at 1:1000. Secondary antibody: HRP Goat Anti-Rabbit IgG (H+L) at 1:5000. Lysates/proteins: 30ug per lane. Blocking buffer: 5% non-fat dry milk in TBST. Detection: ECL Enhanced Kit. Exposure time: 120s.

实验步骤

访问官网浏览详情: www.ablybio.cn