

# DDC Rabbit pAb

货号: **AYP17272**

## 产品信息

|       |  |
|-------|--|
| 反应    | Human,Mouse,Rat  |
| 宿主    | Rabbit   |
| 克隆性   | Polyclonal   |
| 预测反应  |  |
| 应用    | WB IHC IF/ICC  |
| 推荐浓度  | <b>WB:</b> 1:100 - 1:500<br><b>IHC:</b> 1:50 - 1:200<br><b>IF/ICC:</b> 1:50 - 1:200                  |
| 理论分子量 | 37kDa/44kDa/45kDa/53kDa  |
| 实测分子量 | 37KDa/54KDa  |
| 形式    | Liquid   |
| 保存条件  | Store at -20°C. Avoid freeze / thaw cycles.<br>Buffer: PBS with 0.05% proclin300,50% glycerol,pH7.3. |
| 偶联物   | Unconjugated   |
| 阳性对照  | SH-SY5Y,Mouse liver,Mouse brain,Mouse kidney,Rat liver,Rat kidney                                    |
| 细胞定位  | axon,cytoplasm,cytosol,extracellular exosome,synaptic vesicle  |
| 纯化    | Affinity purification  |

## 抗原信息

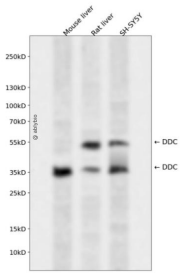
|      |  |
|------|--|
| 抗原信息 | Recombinant fusion protein containing a sequence corresponding to amino acids 1-137 of human DDC (N P_000781.2).                           |
| 序列   | MNASEFRRRGKEMVDYMANYMEGIEGRQVYPDVEPGYLRPLIPAAAPQEPDTFEDIINDVEKIIMPGVTHWHSPYFFAYFPT ASSYPAMLADMLCGAIGCIGFSWAASPACTELETVMMDWLKGKMLELPKAFLEKA |

## 靶点信息

|      |   |
|------|---|
| 研究背景 | The encoded protein catalyzes the decarboxylation of L-3,4-dihydroxyphenylalanine (DOPA) to dopamine, L-5-hydroxytryptophan to serotonin and L-tryptophan to tryptamine. Defects in this gene are the cause of aromatic L-amino-acid decarboxylase deficiency (AADCD). AADCD deficiency is an inborn error in neurotransmitter metabolism that leads to combined serotonin and catecholamine deficiency. Multiple alternatively spliced transcript variants encoding different isoforms have been identified for this gene. |
|------|---|

|       |          |
|-------|----------|
| 基因ID  | 1644     |
| 基因名   | DDC      |
| Swiss | P20711   |
| 别名    | DDC;AADC |

## 产品验证



Western blot analysis of DDC expressed in Mouse liver,Rat liver,SH-SY5Y using DDC Rabbit pAb at 1:1000. Secondary antibody: HRP Goat Anti-Rabbit IgG (H+L) at 1:5000. Lysates/proteins: 30ug per lane. Blocking buffer: 5% non-fat dry milk in TBST. Detection: ECL Enhanced Kit. Exposure time: 120s.

## 实验步骤

访问官网浏览详情: [www.ablybio.cn](http://www.ablybio.cn)