

DVL3 Rabbit pAb

货号: **AYP17269**

产品信息

反应	Human,Mouse,Rat
宿主	Rabbit
克隆性	Polyclonal
预测反应	
应用	WB IHC IF/ICC
推荐浓度	WB: 1:500 - 1:1000 IHC: 1:50 - 1:200 IF/ICC: 1:20 - 1:50
理论分子量	76kDa/78kDa
实测分子量	93KDa
形式	Liquid
保存条件	Store at -20°C. Avoid freeze / thaw cycles. Buffer: PBS with 0.05% proclin300,50% glycerol,pH7.3.
偶联物	Unconjugated
阳性对照	NIH/3T3,C6,Mouse brain
细胞定位	Cytoplasm
纯化	Affinity purification

抗原信息

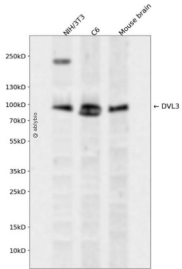
抗原信息	Recombinant fusion protein containing a sequence corresponding to amino acids 580-650 of human DVL3 (NP_004414.3).
序列	RSGSDDRRKEKDPKAGDSKSGGSGSESDHTTRSSLRGPRESRSGPAASEHSHRSHHSLASSLRSHHTH

靶点信息

研究背景	This gene is a member of a multi-gene family which shares strong similarity with the Drosophila dishevelled gene, dsh. The Drosophila dishevelled gene encodes a cytoplasmic phosphoprotein that regulates cell proliferation.
基因ID	1857

基因名	DVL3
Swiss	Q92997
别名	DVL3;DRS3

产品验证



Western blot analysis of DVL3 expressed in NIH/3T3,C6,Mouse brain using DVL3 Rabbit pAb at 1:1000. Secondary antibody: HRP Goat Anti-Rabbit IgG (H+L) at 1:5000. Lysates/proteins: 30ug per lane. Blocking buffer: 5% non-fat dry milk in TBST. Detection: ECL Enhanced Kit. Exposure time: 120s.

实验步骤

访问官网浏览详情: www.ablybio.cn