

HBE1 Rabbit pAb

货号: **AYP17255**

产品信息

反应	Human
宿主	Rabbit
克隆性	Polyclonal
预测反应	
应用	WB
推荐浓度	WB: 1:500 - 1:2000
理论分子量	16kDa
实测分子量	12kDa
形式	Liquid
保存条件	Store at -20°C. Avoid freeze / thaw cycles. Buffer: PBS with 0.02% sodium azide,50% glycerol,pH7.3.
偶联物	Unconjugated
阳性对照	K-562
细胞定位	blood microparticle,cytosol,hemoglobin complex
纯化	Affinity purification

抗原信息

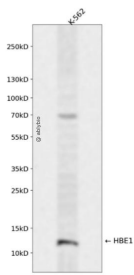
抗原信息	Recombinant fusion protein containing a sequence corresponding to amino acids 1-147 of human HBE1 (NP_005321.1).
序列	MVHFTAEEKAAVTSLSKMNVEEAGGEALGRLLVVPWTQRFFDSFGNLSSPSAILGNPKVKAHGKKVLTSFGDAIKNM DNLKPAFAKLSLHCDKLHVDPENFKLLGNVMVILATHFGKEFTPEVQAAWQKLVSVAIALAHKYH

靶点信息

研究背景	The epsilon globin gene (HBE) is normally expressed in the embryonic yolk sac: two epsilon chains together with two zeta chains (an alpha-like globin) constitute the embryonic hemoglobin Hb Gower I; two epsilon chains together with two alpha chains form the embryonic Hb Gower II. Both of these embryonic hemoglobins are normally supplanted by fetal, and later, adult hemoglobin. The five beta-like globin genes are found within a 45 kb cluster on chromosome 11 in the following order: 5'-epsilon - G-gamma - A-gamma - delta - beta-3'
------	--

基因ID	3046
基因名	HBE1
Swiss	P02100
别名	HBE1;HBE

产品验证



Western blot analysis of HBE1 expressed in K-562 using HBE1 Rabbit pAb at 1:1000. Secondary antibody: HRP Goat Anti-Rabbit IgG (H+L) at 1:5000. Lysates/proteins: 30ug per lane. Blocking buffer: 5% non-fat dry milk in TBST. Detection: ECL Enhanced Kit. Exposure time: 120s.

实验步骤

访问官网浏览详情: www.ablybio.cn