

# ITPKB Rabbit pAb

货号: **AYP17253**

## 产品信息

|       |  |
|-------|--|
| 反应    | Human,Mouse,Rat  |
| 宿主    | Rabbit   |
| 克隆性   | Polyclonal   |
| 预测反应  |  |
| 应用    | WB   |
| 推荐浓度  | <b>WB:</b> 1:200 - 1:2000  |
| 理论分子量 | 67kDa/102kDa   |
| 实测分子量 | 102kDa   |
| 形式    | Liquid   |
| 保存条件  | Store at -20°C. Avoid freeze / thaw cycles.<br>Buffer: PBS with 0.02% sodium azide,50% glycerol,pH7.3. |
| 偶联物   | Unconjugated   |
| 阳性对照  | HeLa,HepG2,BT-474,Mouse lung   |
| 细胞定位  | cytoplasm,cytoskeleton,cytosol,endoplasmic reticulum,nucleus   |
| 纯化    | Affinity purification  |

## 抗原信息

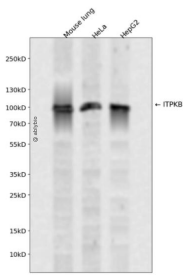
|      |  |
|------|--|
| 抗原信息 | Recombinant fusion protein containing a sequence corresponding to amino acids 1-260 of human ITPKB ( NP_002212.3).   |
| 序列   | MAVYCYALNSLVIMNSANEMKSGGGPGPSGSETPPPPRRAVLSPGVSFSPGRGASFLFPPAESLSPEEPRSPGGWRSGR<br>RRLNSSSGSGSGSSGSSVSSPSWAGRLRGDRQQVVAAGTLSPPGPEEAKRKLRLQRELQNVQVNQKVMFEAHIAQ<br>SSAIQAPRSPRLGRARSPSPCFRSSSQPPGRVLVQGARSEERRTKSWGEQCPETSGTDSGRKGGPSLCSSQVKKGMPP<br>LPGRAAPTGSEAQGPSAFVRMEKG |

## 靶点信息

|      |  |
|------|--|
| 研究背景 | The protein encoded by this protein regulates inositol phosphate metabolism by phosphorylation of second messenger inositol 1,4,5-trisphosphate to Ins(1,3,4,5)P4. The activity of this encoded protein is responsible for regulating the levels of a large number of inositol polyphosphates that are important in cellular signaling. Both calcium/calmodulin and protein phosphorylation mechanisms control its activity. |
|------|--|

|       |                                       |
|-------|---------------------------------------|
| 基因ID  | 3707                                  |
| 基因名   | ITPKB                                 |
| Swiss | P27987                                |
| 别名    | ITPKB;IP3-3KB;IP3K;IP3K-B;IP3KB;PIG37 |

## 产品验证



Western blot analysis of ITPKB expressed in Mouse lung, HeLa, HepG2 using ITPKB Rabbit pAb at 1:1000. Secondary antibody: HRP Goat Anti-Rabbit IgG (H+L) at 1:5000. Lysates/proteins: 30ug per lane. Blocking buffer: 5% non-fat dry milk in TBST. Detection: ECL Enhanced Kit. Exposure time: 120s.

## 实验步骤

访问官网浏览详情: [www.ablybio.cn](http://www.ablybio.cn)