

PRPH Rabbit pAb

货号: **AYP17246**

产品信息

反应	Human,Mouse,Rat
宿主	Rabbit
克隆性	Polyclonal
预测反应	
应用	WB IF/ICC
推荐浓度	WB: 1:100 - 1:500 IF/ICC: 1:50 - 1:200
理论分子量	53kDa
实测分子量	54KDa
形式	Liquid
保存条件	Store at -20°C. Avoid freeze / thaw cycles. Buffer: PBS with 0.02% sodium azide,50% glycerol,pH7.3.
偶联物	Unconjugated
阳性对照	Mouse spinal cord,Mouse brain
细胞定位	axon,cytoplasm,extracellular exosome,perikaryon,plasma membrane
纯化	Affinity purification

抗原信息

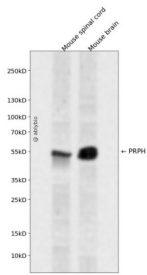
抗原信息	Recombinant fusion protein containing a sequence corresponding to amino acids 1-260 of human PRPH (NP_006253.2).
序列	MSHHPSGLRAGFSSTSYRRTFGPPPSLSPGAFSYSSSRFSSSRLLGSASPSSSVRLGSFRSPRAGAGALLRLPSERLDFS MAEALNQEFLATRSNEKQELQELNDRFANFIEKVRFLQEQNAALRGELSQARGQEPARADQLCQELRELRRELELLGRER DRVQVERDGLAEDLAALKQRLEEETRKREDAEHNVLVFRKDVDATLSRLELERKIESLMDEIEFLKKLHEEELRDLQVSVE SQVQVQVEEATVKPE

靶点信息

研究背景	This gene encodes a cytoskeletal protein found in neurons of the peripheral nervous system. The encoded protein is a type III intermediate filament protein with homology to other cytoskeletal proteins such as desmin, and is a different protein than the peripherin found in photoreceptors. Mutations in this gene have been associated with susceptibility to amyotrophic lateral sclerosis.
------	--

基因ID	5630
基因名	PRPH
Swiss	P41219
别名	PRPH;NEF4;PRPH1

产品验证



Western blot analysis of PRPH expressed in Mouse spinal cord, Mouse brain using PRPH Rabbit pAb at 1:10 00. Secondary antibody: HRP Goat Anti-Rabbit IgG (H+L) at 1:5000. Lysates/proteins: 30ug per lane. Blocking buffer: 5% non-fat dry milk in TBST. Detection: ECL Enhanced Kit. Exposure time: 120s.

实验步骤

访问官网浏览详情: www.ablybio.cn