

RPL23A Rabbit pAb

货号: **AYP17240**

产品信息

反应	Human,Mouse,Rat
宿主	Rabbit
克隆性	Polyclonal
预测反应	
应用	WB IHC IF/ICC
推荐浓度	WB: 1:500 - 1:2000 IHC: 1:50 - 1:200 IF/ICC: 1:50 - 1:100
理论分子量	17kDa
实测分子量	20kDa
形式	Liquid
保存条件	Store at -20°C. Avoid freeze / thaw cycles. Buffer: PBS with 0.02% sodium azide,50% glycerol,pH7.3.
偶联物	Unconjugated
阳性对照	U-87MG,HT-1080,COS-7,HeLa,Jurkat,MCF7,Mouse lung,Mouse brain,Rat brain
细胞定位	cytoplasm,cytosol,cytosolic ribosome,extracellular exosome,nucleolus,nucleus
纯化	Affinity purification

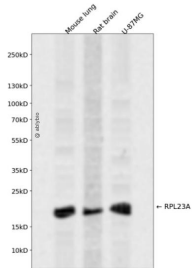
抗原信息

抗原信息	Recombinant fusion protein containing a sequence corresponding to amino acids 1-156 of human RPL23A (NP_000975.2).
序列	MAPKAKKEAPAPPKAEAKAKALKAKKAVLKGVHSHKKKIRTSPTFRPKTLRLRRQPKYPRKSAPRRNKLDHYAIKFPLTT ESAMKKIEDNNTLVFIVDVKANKHQIKQAVKKLYDIDVAKVNTLIRPDGEKKAYVRLAPDYDALDVANKIGII

靶点信息

研究背景	Ribosomes, the organelles that catalyze protein synthesis, consist of a small 40S subunit and a large 60S subunit. Together these subunits are composed of 4 RNA species and approximately 80 structurally distinct proteins. This gene encodes a ribosomal protein that is a component of the 60S subunit. The protein belongs to the L23P family of ribosomal proteins. It is located in the cytoplasm. The protein may be one of the target molecules involved in mediating growth inhibition by interferon. In yeast, the corresponding protein binds to a specific site on the 26S rRNA. This gene is co-transcribed with the U42A, U42B, U101A, and U101B small nucleolar RNA genes, which are located in its third, first, second, and fourth introns, respectively. As is typical for genes encoding ribosomal proteins, there are multiple processed pseudogenes of this gene dispersed through the genome.
基因ID	6147
基因名	RPL23A
Swiss	P62750
别名	RPL23A;L23A;MDA20

产品验证



Western blot analysis of RPL23A expressed in Mouse lung, Rat brain, U-87MG using RPL23A Rabbit pAb at 1:1000. Secondary antibody: HRP Goat Anti-Rabbit IgG (H+L) at 1:5000. Lysates/proteins: 30ug per lane. Blocking buffer: 5% non-fat dry milk in TBST. Detection: ECL Enhanced Kit. Exposure time: 120s.

实验步骤

访问官网浏览详情: www.ablybio.cn