

Phospho-PLN-S16/T17 Rabbit pAb

货号: **AYP17214**

产品信息

| | |
|-------|--|
| 反应 | Human,Mouse,Rat |
| 宿主 | Rabbit |
| 克隆性 | Polyclonal |
| 预测反应 | |
| 应用 | WB |
| 推荐浓度 | WB: 1:500 - 1:1000 |
| 理论分子量 | 6kDa |
| 实测分子量 | 13kDa/17kDa |
| 形式 | Liquid |
| 保存条件 | Store at -20°C. Avoid freeze / thaw cycles. Buffer: PBS with 0.01% thiomersal,50% glycerol,pH7.3. |
| 偶联物 | Unconjugated |
| 阳性对照 | HeLa,C6 |
| 细胞定位 | endoplasmic reticulum,mitochondrial membrane,mitochondrion,perinuclear region of cytoplasm |
| 纯化 | Affinity purification |

抗原信息

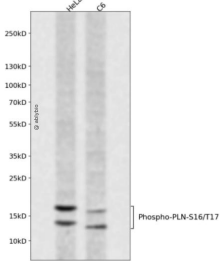
| | |
|------|---|
| 抗原信息 | A synthetic phosphorylated peptide around S16 & T17 of human PLN (NP_002658.1). |
| 序列 | ASTIE |

靶点信息

| | |
|------|--|
| 研究背景 | The protein encoded by this gene is found as a pentamer and is a major substrate for the cAMP-dependent protein kinase in cardiac muscle. The encoded protein is an inhibitor of cardiac muscle sarcoplasmic reticulum Ca(2+)-ATPase in the unphosphorylated state, but inhibition is relieved upon phosphorylation of the protein. The subsequent activation of the Ca(2+) pump leads to enhanced muscle relaxation rates, thereby contributing to the inotropic response elicited in heart by beta-agonists. The encoded protein is a key regulator of cardiac diastolic function. Mutations in this gene are a cause of inherited human dilated cardiomyopathy with refractory congestive heart failure, and also familial hypertrophic cardiomyopathy. |
| 基因ID | 5350 |

| | |
|-------|---------------------|
| 基因名 | PLN |
| Swiss | P26678 |
| 别名 | CMD1P;CMH18;PLB;PLN |

产品验证



Western blot analysis of Phospho-PLN-S16/T17 expressed in HeLa,C6 using Phospho-PLN-S16/T17 R abbit pAb at 1:1000. Secondary antibody: HRP Goat Anti-Rabbit IgG (H+L) at 1:5000. Lysates/proteins: 30ug per lane. Blocking buffer: 5% non-fat dry milk in TBST. Detection: ECL Enhanced Kit. Exposure time: 120s.

实验步骤

访问官网浏览详情: www.ablybio.cn