

# RPL23 Rabbit pAb

货号: **AYP17209**

## 产品信息

反应	Human,Mouse,Rat
宿主	Rabbit
克隆性	Polyclonal
预测反应	
应用	WB IHC IF/ICC
推荐浓度	<b>WB:</b> 1:500 - 1:4000 <b>IHC:</b> 1:50 - 1:200 <b>IF/ICC:</b> 1:50 - 1:200
理论分子量	14kDa
实测分子量	15kDa
形式	Liquid
保存条件	Store at -20°C. Avoid freeze / thaw cycles. Buffer: PBS with 0.02% sodium azide,50% glycerol,pH7.3.
偶联物	Unconjugated
阳性对照	SH-SY5Y,293T,HeLa,HepG2,BT-474,HT-1080,Mouse liver,Rat liver
细胞定位	cytoplasm,cytosol,cytosolic ribosome,extracellular exosome,focal adhesion,nucleolus,nucleoplasm
纯化	Affinity purification

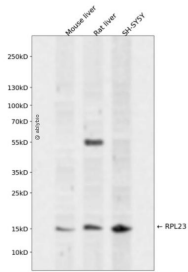
## 抗原信息

抗原信息	Recombinant fusion protein containing a sequence corresponding to amino acids 1-140 of human RPL23 (NP_000969.1).
序列	MSKRGRGGSSGAKFRISLGLPVGAVINCADNTGAKNLYIISVKGIKGRNLNRLPAAGVGDMMATVKKGKPELRKKVHPAV VIRQRKSYRRKDGVFLYFEDNAGVIVNNGEMKGSAITGPVAKECADLWPRIASNAGSIA

## 靶点信息

研究背景	Ribosomes, the organelles that catalyze protein synthesis, consist of a small 40S subunit and a large 60S subunit. Together these subunits are composed of 4 RNA species and approximately 80 structurally distinct proteins. This gene encodes a ribosomal protein that is a component of the 60S subunit. The protein belongs to the L14P family of ribosomal proteins. It is located in the cytoplasm. This gene has been referred to as rpL17 because the encoded protein shares amino acid identity with ribosomal protein L17 from <i>Saccharomyces cerevisiae</i> ; however, its official symbol is RPL23. As is typical for genes encoding ribosomal proteins, there are multiple processed pseudogenes of this gene dispersed through the genome.
基因ID	9349
基因名	RPL23
Swiss	P62829
别名	RPL23;L23;rpL17

## 产品验证



Western blot analysis of RPL23 expressed in Mouse liver, Rat liver, SH-SY5Y using RPL23 Rabbit pAb at 1:1000. Secondary antibody: HRP Goat Anti-Rabbit IgG (H+L) at 1:5000. Lysates/proteins: 30ug per lane. Blocking buffer: 5% non-fat dry milk in TBST. Detection: ECL Enhanced Kit. Exposure time: 120s.

## 实验步骤

访问官网浏览详情: [www.ablybio.cn](http://www.ablybio.cn)