

# DEP1 Rabbit pAb

货号: **AYP17204**

## 产品信息

反应	Oryza sativa
宿主	Rabbit
克隆性	Polyclonal
预测反应	
应用	WB
推荐浓度	<b>WB:</b> 1:500 - 1:2000
理论分子量	45kDa
实测分子量	50kDa/60kDa
形式	Liquid
保存条件	Store at -20°C. Avoid freeze / thaw cycles. Buffer: PBS with 0.02% sodium azide,50% glycerol,pH7.3.
偶联物	Unconjugated
阳性对照	stems (before flower),leaves sheath (before flower),flower buds (before flower), flag leaves (after flower),f lowers,milk seeds
细胞定位	nucleus,plasma membrane
纯化	Affinity purification

## 抗原信息

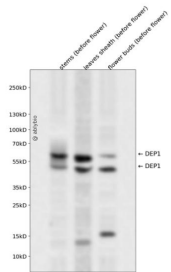
抗原信息	Recombinant protein of Oryza sativa DEP1.
序列	

## 靶点信息

研究背景	Guanine nucleotide-binding proteins (G proteins are involved as a modulator or transducer in various transmembrane signaling systems (Probable. The beta and gamma chains are required for the GTPase activity, for replacement of GDP by GTP, and for G protein-effector interaction (Probable. Involved in the regulation of plant architecture, panicle erectness, panicle and grain length, grain weight, and grain yield. Involved in the regulation of grain size.
基因ID	4347178

基因名	
Swiss	Q67UU9
别名	keratin-associated protein 5-5;DN1; DEP1; pay1;DENSE PANICLE 1;Putative keratin associated protein;Os 09g0441900;OsJ_29530;P0046G12.12-1

## 产品验证



Western blot analysis of DEP1 expressed in stems (before flower), leaves sheath (before flower), flower buds (before flower) using DEP1 Rabbit pAb at 1:1000. Secondary antibody: HRP Goat Anti-Rabbit IgG (H+L) at 1:5000. Lysates/proteins: 30ug per lane. Blocking buffer: 5% non-fat dry milk in TBST. Detection: ECL Enhanced Kit. Exposure time: 120s.

## 实验步骤

访问官网浏览详情: [www.ablybio.cn](http://www.ablybio.cn)