

EMG1 Rabbit pAb

货号: **AYP17195**

产品信息

反应	Human,Mouse,Rat
宿主	Rabbit
克隆性	Polyclonal
预测反应	
应用	WB
推荐浓度	WB: 1:500 - 1:2000
理论分子量	26kDa
实测分子量	27kDa
形式	Liquid
保存条件	Store at -20°C. Avoid freeze / thaw cycles. Buffer: PBS with 0.02% sodium azide,50% glycerol,pH7.3.
偶联物	Unconjugated
阳性对照	HeLa,HepG2,Mouse heart,Rat liver
细胞定位	Nucleus,nucleolus
纯化	Affinity purification

抗原信息

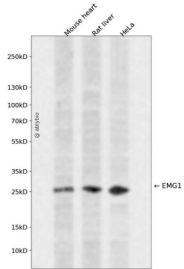
抗原信息	Recombinant fusion protein containing a sequence corresponding to amino acids 1-244 of human EMG1 (NP_006322.4).
序列	MAAPSDGFKPRERSGGEQADWDALPPKRPRLGAGNKIGRRLLIVVLEGASLETVKVGKTYELLNCDKHKSILLKNGRDP GEARPDITHQSLMLMDSPLNRAGLLQVYIHTQKNVLIENVNPQTRIPRTFDRFCGLMVQLLHKLSVRAADGPQKLLKVIKNP VSDHFPVGCМКVGTFSIPVVSDVRELVPSDPIVFWGAFAHGKVSVEYTEKMVSISNYPLSAALTCAKLTTAFEEVWGV

靶点信息

研究背景	This gene encodes an essential, conserved eukaryotic protein that methylates pseudouridine in 18S rRNA. The related protein in yeast is a component of the small subunit processome and is essential for biogenesis of the ribosomal 40S subunit. A mutation in this gene has been associated with Bowen-Conradi syndrome. Alternative splicing results in multiple transcript variants.
基因ID	10436

基因名	EMG1
Swiss	Q92979
别名	EMG1;C2F;Grcc2f;NEP1

产品验证



Western blot analysis of EMG1 expressed in Mouse heart,Rat liver,HeLa using EMG1 Rabbit pAb at 1:1000. Secondary antibody: HRP Goat Anti-Rabbit IgG (H+L) at 1:5000. Lysates/proteins: 30ug per lane. Blocking buffer: 5% non-fat dry milk in TBST. Detection: ECL Enhanced Kit. Exposure time: 120s.

实验步骤

访问官网浏览详情: www.ablybio.cn