

PDE1A Rabbit pAb

货号: **AYP17185**

产品信息

反应	Human,Mouse,Rat
宿主	Rabbit
克隆性	Polyclonal
预测反应	
应用	WB
推荐浓度	WB: 1:500 - 1:2000
理论分子量	57kDa/58kDa/59kDa/60kDa/61kDa/62kDa/63kDa
实测分子量	55kDa
形式	Liquid
保存条件	Store at -20°C. Avoid freeze / thaw cycles. Buffer: PBS with 0.02% sodium azide,50% glycerol,pH7.3.
偶联物	Unconjugated
阳性对照	Mouse heart,Mouse brain,Mouse kidney,Rat heart,Rat brain
细胞定位	cytosol
纯化	Affinity purification

抗原信息

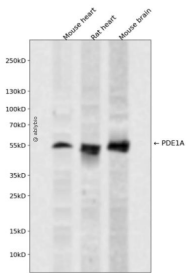
抗原信息	Recombinant fusion protein containing a sequence corresponding to amino acids 446-545 of human PDE1 A (NP_005010.2).
序列	EASKAETSSYVASSSTTIVGLHIADALRRSNTKGSMSDGSYSPDYSLAAVDLKSFKNNLVDIIQQNKERWKELAAQGESDL HKNSDNLVNAEEKHDETHS

靶点信息

研究背景	
基因ID	5136
基因名	PDE1A

Swiss	P54750
别名	PDE1A;CAM-PDE-1A;HCAM-1;HCAM1;HSPDE1A

产品验证



Western blot analysis of PDE1A expressed in Mouse heart,Rat heart,Mouse brain using PDE1A Rabbit p Ab at 1:1000. Secondary antibody: HRP Goat Anti-Rabbit IgG (H+L) at 1:5000. Lysates/proteins: 30ug per lane. Blocking buffer: 5% non-fat dry milk in TBST. Detection: ECL Enhanced Kit. Exposure time: 120s

实验步骤

访问官网浏览详情: www.ablybio.cn