

CLASP2 Rabbit pAb

货号: **AYP17171**

产品信息

反应	Human,Mouse,Rat
宿主	Rabbit
克隆性	Polyclonal
预测反应	
应用	WB
推荐浓度	WB: 1:500 - 1:2000
理论分子量	46kDa/141kDa/165kDa
实测分子量	141kDa
形式	Liquid
保存条件	Store at -20°C. Avoid freeze / thaw cycles. Buffer: PBS with 0.02% sodium azide,50% glycerol,pH7.3.
偶联物	Unconjugated
阳性对照	Mouse eye,Mouse brain,Mouse lung,Rat eye
细胞定位	Cell membrane,Cell projection,Chromosome,Cytoplasm,Golgi apparatus,centromere,centrosome,cytoskeleton,kinetochore,microtubule organizing center,ruffle membrane,spindle,trans-Golgi network
纯化	Affinity purification

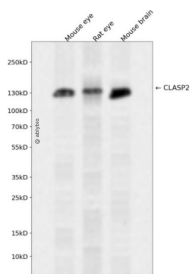
抗原信息

抗原信息	Recombinant fusion protein containing a sequence corresponding to amino acids 220-400 of human CLASP2 (NP_001193973.1).
序列	NCTSKSVPVRRRSFEFLDLLLQEWQTHSLERHAAVLVETIKKGIHDADAEARVEARKTYMGLRNHFPGEAETLYNSLEPSYQKSLQTYLKSSGSVASLPQSDRSSSSSQESLNRPFSSKWSTANPSTVAGRVSAGSSKASSLPGSLQRSRSDIDVNAAAGAKAHHAAGQSVRSGRLGAGAL

靶点信息

研究背景	Microtubule plus-end tracking protein that promotes the stabilization of dynamic microtubules. Involved in the nucleation of noncentrosomal microtubules originating from the trans-Golgi network (TGN. Required for the polarization of the cytoplasmic microtubule arrays in migrating cells towards the leading edge of the cell. May act at the cell cortex to enhance the frequency of rescue of depolymerizing microtubules by attaching their plus-ends to cortical platforms composed of ERC1 and PHLDB2. This cortical microtubule stabilizing activity is regulated at least in part by phosphatidylinositol 3-kinase signaling. Also performs a similar stabilizing function at the kinetochore which is essential for the bipolar alignment of chromosomes on the mitotic spindle. Acts as a mediator of ERBB2-dependent stabilization of microtubules at the cell cortex.
基因ID	23122
基因名	CLASP2
Swiss	O75122
别名	CLASP2

产品验证



Western blot analysis of CLASP2 expressed in Mouse eye, Rat eye, Mouse brain using CLASP2 Rabbit pAb at 1:1000. Secondary antibody: HRP Goat Anti-Rabbit IgG (H+L) at 1:5000. Lysates/proteins: 30ug per lane. Blocking buffer: 5% non-fat dry milk in TBST. Detection: ECL Enhanced Kit. Exposure time: 120s.

实验步骤

访问官网浏览详情: www.ablybio.cn