

# EML2 Rabbit pAb

货号: **AYP17164**

## 产品信息

反应	Human,Mouse
宿主	Rabbit
克隆性	Polyclonal
预测反应	
应用	WB
推荐浓度	<b>WB:</b> 1:500 - 1:2000
理论分子量	70kDa/86kDa/92kDa
实测分子量	71kDa
形式	Liquid
保存条件	Store at -20°C. Avoid freeze / thaw cycles. Buffer: PBS with 0.01% thiomersal,50% glycerol,pH7.3.
偶联物	Unconjugated
阳性对照	Mouse heart,Mouse kidney
细胞定位	Cytoplasm,cytoskeleton,spindle
纯化	Affinity purification

## 抗原信息

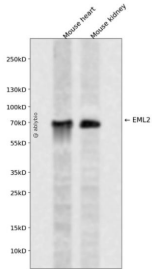
抗原信息	Recombinant fusion protein containing a sequence corresponding to amino acids 150-415 of human EML2 (NP_036287.1).
序列	LHVLGLGVFDRAVCCVGFSGKSNNGNLLCAVDESNDHMLSVWDWAKETKVVDVKCSNEAVLVATFHPTDPTVLITCGKSHIYFWTLEGGSLSKRQGLFEKHEKPKYVLCVTFLEGDDVVTGDSGGNLYVWGKGGNRRITQAVLGAHDGGVFGLCALRDGTLVSGGGRDRRVVLWGSYSLQVEVPEDFGPVRTVAEGHGDTLYVGTTRNSILQGSVHTGFSLVQGHVEELWGLATHPSRAQFVTCGQDKLVHLWSSDSHQPLWSR

## 靶点信息

研究背景	Tubulin binding protein that inhibits microtubule nucleation and growth, resulting in shorter microtubules.
基因ID	24139
基因名	EML2

<b>Swiss</b>	O95834
别名	EML2;ELP70;EMAP-2;EMAP2

## 产品验证



Western blot analysis of EML2 expressed in Mouse heart, Mouse kidney using EML2 Rabbit pAb at 1:1000. Secondary antibody: HRP Goat Anti-Rabbit IgG (H+L) at 1:5000. Lysates/proteins: 30ug per lane. Blocking buffer: 5% non-fat dry milk in TBST. Detection: ECL Enhanced Kit. Exposure time: 120s.

## 实验步骤

访问官网浏览详情: [www.ablybio.cn](http://www.ablybio.cn)