

# SLC39A6 Rabbit pAb

货号: **AYP17159**

## 产品信息

反应	Human,Mouse,Rat
宿主	Rabbit
克隆性	Polyclonal
预测反应	
应用	WB
推荐浓度	<b>WB:</b> 1:500 - 1:2000
理论分子量	48kDa/85kDa
实测分子量	102kDa
形式	Liquid
保存条件	Store at -20°C. Avoid freeze / thaw cycles. Buffer: PBS with 0.02% sodium azide,50% glycerol,pH7.3.
偶联物	Unconjugated
阳性对照	MCF7,BT-474,A-549,HeLa,Rat testis
细胞定位	Cell membrane,Multi-pass membrane protein
纯化	Affinity purification

## 抗原信息

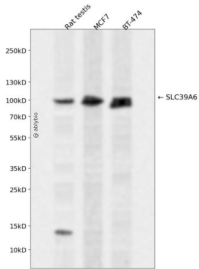
抗原信息	Recombinant fusion protein containing a sequence corresponding to amino acids 170-320 of human SLC39A6 (NP_001092876.1).
序列	KQFKDKKKKNQKQPENDDDDVEIKKQLSKYESQLSTNEEKVDTDDRTEGYLRADSQEPSHFDSQQPAVLEEEVEMIAHAH PQEVYNEYVPRGCKNKCHSHFHDTLGQSDDLIHHDYHHILHHHHHQNHHPHSHSQRYREELKDAGVATL

## 靶点信息

研究背景	
基因ID	25800
基因名	SLC39A6

Swiss	Q13433
别名	SLC39A6;LIV-1;ZIP6

## 产品验证



Western blot analysis of SLC39A6 expressed in Rat testis,MCF7,BT-474 using SLC39A6 Rabbit pAb at 1:1000. Secondary antibody: HRP Goat Anti-Rabbit IgG (H+L) at 1:5000. Lysates/proteins: 30ug per lane. Blocking buffer: 5% non-fat dry milk in TBST. Detection: ECL Enhanced Kit. Exposure time: 120s.

## 实验步骤

访问官网浏览详情: [www.ablybio.cn](http://www.ablybio.cn)