

TIMM10 Rabbit pAb

货号: **AYP17154**

产品信息

反应	Human,Mouse,Rat
宿主	Rabbit
克隆性	Polyclonal
预测反应	
应用	WB IF/ICC
推荐浓度	WB: 1:500 - 1:2000 IF/ICC: 1:50 - 1:200
理论分子量	10kDa
实测分子量	12kDa
形式	Liquid
保存条件	Store at -20°C. Avoid freeze / thaw cycles. Buffer: PBS with 0.02% sodium azide,50% glycerol,pH7.3.
偶联物	Unconjugated
阳性对照	MCF7,LO2,HepG2,NCI-H460,Mouse brain,Mouse small intestine,Mouse liver,Mouse heart,Rat liver
细胞定位	Intermembrane side,Mitochondrion inner membrane,Peripheral membrane protein
纯化	Affinity purification

抗原信息

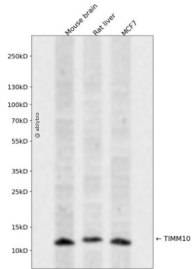
抗原信息	Recombinant fusion protein containing a sequence corresponding to amino acids 1-90 of human TIMM10 (NP_036588.1).
序列	MDPLRAQQLAEELEVEMMADMYNRMTSACHRKCVPPHYKEELSKGESVCLDRCVSKYLDIHERMGKLTLSMQDEELMKRVQQSSGPA

靶点信息

研究背景	The mitochondrial protein encoded by this gene belongs to a family of evolutionarily conserved proteins that are organized in heterooligomeric complexes in the mitochondrial intermembrane space. These proteins mediate the import and insertion of hydrophobic membrane proteins into the mitochondrial inner membrane, functioning as intermembrane space chaperones for the highly insoluble carrier proteins.
基因ID	26519

基因名	TIMM10
Swiss	P62072
别名	TIMM10;TIM10;TIM10A;TIMM10A

产品验证



Western blot analysis of TIMM10 expressed in Mouse brain,Rat liver,MCF7 using TIMM10 Rabbit pAb at 1:1000. Secondary antibody: HRP Goat Anti-Rabbit IgG (H+L) at 1:5000. Lysates/proteins: 30ug per lane. Blocking buffer: 5% non-fat dry milk in TBST. Detection: ECL Enhanced Kit. Exposure time: 120s.

实验步骤

访问官网浏览详情: www.ablybio.cn