

MRPS28 Rabbit pAb

货号: AYP17150

产品信息

反应	Human,Mouse
宿主	Rabbit
克隆性	Polyclonal
预测反应	
应用	WB IF/ICC
推荐浓度	WB: 1:500 - 1:1000 IF/ICC: 1:20 - 1:100
理论分子量	20kDa
实测分子量	21kDa
形式	Liquid
保存条件	Store at -20°C. Avoid freeze / thaw cycles. Buffer: PBS with 0.01% thiomersal,50% glycerol,pH7.3.
偶联物	Unconjugated
阳性对照	HeLa,293T
细胞定位	Mitochondrion
纯化	Affinity purification

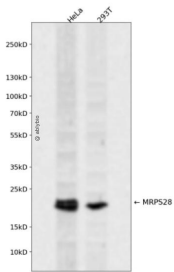
抗原信息

抗原信息	Recombinant fusion protein containing a sequence corresponding to amino acids 1-187 of human MRPS28 (NP_054737.1).
序列	MAALCRTRAVAAESHFLRVFLFFRPFGRVGTESGSESGSSNAKEPKTRAGGFASALERHSELLQKVEPLQKGGSPKNVESFASMLRHSPLTQMGPADKLVIGRIFHIVENDLYIDFGGKFHVCRRPEVDGEKYQKGRVRLRLDLELTSRFLGATDITVLEANAVLLGIQESKDSRSKEEHHEK

靶点信息

研究背景	Mammalian mitochondrial ribosomal proteins are encoded by nuclear genes and help in protein synthesis within the mitochondrion. Mitochondrial ribosomes (mitoribosomes) consist of a small 28S subunit and a large 39S subunit. They have an estimated 75% protein to rRNA composition compared to prokaryotic ribosomes, where this ratio is reversed. Another difference between mammalian mitoribosomes and prokaryotic ribosomes is that the latter contain a 5S rRNA. Among different species, the proteins comprising the mitoribosome differ greatly in sequence, and sometimes in biochemical properties, which prevents easy recognition by sequence homology. This gene encodes a 28S subunit protein that has been called mitochondrial ribosomal protein S35 in the literature.
基因ID	28957
基因名	MRPS28
Swiss	Q9Y2Q9
别名	MRPS28;HSPC007;MRP-S28;MRP-S35;MRPS35

产品验证



Western blot analysis of MRPS28 expressed in HeLa,293T using MRPS28 Rabbit pAb at 1:1000. Secondary antibody: HRP Goat Anti-Rabbit IgG (H+L) at 1:5000. Lysates/proteins: 30ug per lane. Blocking buffer: 5% non-fat dry milk in TBST. Detection: ECL Enhanced Kit. Exposure time: 120s.

实验步骤

访问官网浏览详情: www.ablybio.cn