

SAR1B Rabbit pAb

货号: **AYP17148**

产品信息

反应	Human
宿主	Rabbit
克隆性	Polyclonal
预测反应	
应用	WB
推荐浓度	WB: 1:500 - 1:2000
理论分子量	22kDa
实测分子量	22kDa
形式	Liquid
保存条件	Store at -20°C. Avoid freeze / thaw cycles. Buffer: PBS with 0.01% thiomersal,50% glycerol,pH7.3.
偶联物	Unconjugated
阳性对照	
细胞定位	Endoplasmic reticulum membrane,Golgi apparatus,Golgi stack membrane,Peripheral membrane protein
纯化	Affinity purification

抗原信息

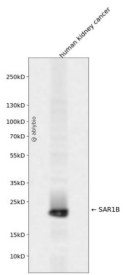
抗原信息	Recombinant fusion protein containing a sequence corresponding to amino acids 1-198 of human SAR1B (NP_057187.1).
序列	MSFIFDWIYSGFSSVLQFLGLYKKTGKLVFLGLDNAGKTTLLHMLKDDRLGQHVPTLHPTSEELTIAGMTFTTFFDLGGHVQARRVWKNYLPAINGIVFLVDCADHERLLESKEELDSLMTDETIANVPILILGNKIDRPEAISEERLREMFLYGYQTGKGSISLKELNARPLEVFMCSVLKRQGYGEGFRWMAQYID

靶点信息

研究背景	The protein encoded by this gene is a small GTPase that acts as a homodimer. The encoded protein is activated by the guanine nucleotide exchange factor PREB and is involved in protein transport from the endoplasmic reticulum to the Golgi. This protein is part of the COPII coat complex. Defects in this gene are a cause of chylomicron retention disease (CMRD), also known as Anderson disease (ANDD). Two transcript variants encoding the same protein have been found for this gene.
------	--

基因ID	51128
基因名	SAR1B
Swiss	Q9Y6B6
别名	SAR1B;ANDD;CMRD;GTBPB;SARA2

产品验证



Western blot analysis of SAR1B expressed in human kidney cancer using SAR1B Rabbit pAb at 1:1000. Secondary antibody: HRP Goat Anti-Rabbit IgG (H+L) at 1:5000. Lysates/proteins: 30ug per lane. Blocking buffer: 5% non-fat dry milk in TBST. Detection: ECL Enhanced Kit. Exposure time: 120s.

实验步骤

访问官网浏览详情: www.ablybio.cn