

NELFCD Rabbit pAb

货号: **AYP17142**

产品信息

反应	Human,Mouse,Rat
宿主	Rabbit
克隆性	Polyclonal
预测反应	
应用	WB IHC
推荐浓度	WB: 1:500 - 1:1000 IHC: 1:50 - 1:200
理论分子量	22kDa/65kDa/66kDa
实测分子量	66KDa
形式	Liquid
保存条件	Store at -20°C. Avoid freeze / thaw cycles. Buffer: PBS with 0.05% proclin300,50% glycerol,pH7.3.
偶联物	Unconjugated
阳性对照	HCT116,293T,NCI-H460,Mouse testis
细胞定位	Nucleus
纯化	Affinity purification

抗原信息

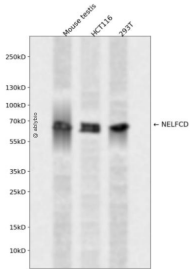
抗原信息	Recombinant fusion protein containing a sequence corresponding to amino acids 40-182 of human NELFCD (NP_945327.3).
序列	HKFSTRDYIMEPSIFNTLKRYFQAGGSPENVIQLLSENYTAVAQTVNLLAEWLIQTGVPEPVQVQETVENHLKSLLIKHFDPKADSIFTEEGETPAWLEQMIAHTTWRDLFYKLAEAHPDCLMLNFTVKLISDAGYQGEITSV

靶点信息

研究背景	The NELF complex of proteins interacts with the DSIF protein complex to repress transcriptional elongation by RNA polymerase II. The protein encoded by this gene is an essential part of the NELF complex. Alternative translation initiation site usage results in the formation of two isoforms with different N-termini.
基因ID	51497

基因名	NELFCD
Swiss	Q8IXH7
别名	NELFCD;HSPC130;NELF-C;NELF-D;TH1;TH1L

产品验证



Western blot analysis of NELFCD expressed in Mouse testis, HCT116, 293T using NELFCD Rabbit pAb at 1:1000. Secondary antibody: HRP Goat Anti-Rabbit IgG (H+L) at 1:5000. Lysates/proteins: 30ug per lane. Blocking buffer: 5% non-fat dry milk in TBST. Detection: ECL Enhanced Kit. Exposure time: 120s.

实验步骤

访问官网浏览详情: www.ablybio.cn