

OTUD7B Rabbit pAb

货号: **AYP17131**

产品信息

反应	Human
宿主	Rabbit
克隆性	Polyclonal
预测反应	
应用	WB IHC
推荐浓度	WB: 1:200 - 1:1000 IHC: 1:20 - 1:50
理论分子量	88kDa/92kDa
实测分子量	93kDa
形式	Liquid
保存条件	Store at -20°C. Avoid freeze / thaw cycles. Buffer: PBS with 0.01% thiomersal, 50% glycerol, pH7.3.
偶联物	Unconjugated
阳性对照	MDA-MB-453
细胞定位	Cytoplasm, Nucleus
纯化	Affinity purification

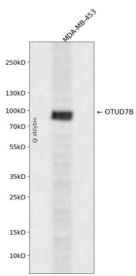
抗原信息

抗原信息	Recombinant fusion protein containing a sequence corresponding to amino acids 530-700 of human OTU D7B (NP_064590.2).
序列	SKPGGVGTGLGGSSGTETLEKKKKNSLKS WKGGKEEAAGDGPVSEKPPAESVGNNGGSKYSQEVMSLSILRTAMQGEK KFIFVGTLMGHRHQYQEEMIQRYSLSAEERFLAEQKQKEAERKIMNNGGIGGGPPPAKKPEPDAREEQPTGPPAESRAMA FSTGYPGDFTIPR

靶点信息

研究背景	Negative regulator of the non-canonical NF-kappa-B pathway that acts by mediating deubiquitination of T RAF3, an inhibitor of the NF-kappa-B pathway, thereby acting as a negative regulator of B-cell responses. In response to non-canonical NF-kappa-B stimuli, deubiquitinates 'Lys-48'-linked polyubiquitin chains of T RAF3, preventing TRAF3 proteolysis and over-activation of non-canonical NF-kappa-B. Negatively regulates mucosal immunity against infections (By similarity. Deubiquitinates ZAP70, and thereby regulates T cell receptor (TCR) signaling that leads to the activation of NF-kappa-B. Plays a role in T cell homeostasis and is required for normal T cell responses, including production of IFNG and IL2 (By similarity. Mediates deubiquitination of EGFR. Has deubiquitinating activity toward 'Lys-11', 'Lys-48' and 'Lys-63'-linked polyubiquitin chains. Has a much higher catalytic rate with 'Lys-11'-linked polyubiquitin chains (in vitro; however the physiological significance of these data are unsure. Hydrolyzes both linear and branched forms of polyubiquitin.
基因ID	56957
基因名	OTUD7B
Swiss	Q6GQQ9
别名	OTUD7B;CEZANNE;ZA20D1

产品验证



Western blot analysis of OTUD7B expressed in MDA-MB-453 using OTUD7B Rabbit pAb at 1:1000. Secondary antibody: HRP Goat Anti-Rabbit IgG (H+L) at 1:5000. Lysates/proteins: 30ug per lane. Blocking buffer: 5% non-fat dry milk in TBST. Detection: ECL Enhanced Kit. Exposure time: 120s.

实验步骤

访问官网浏览详情: www.ablybio.cn