

RMI1 Rabbit pAb

货号: **AYP17119**

产品信息

反应	Human,Mouse
宿主	Rabbit
克隆性	Polyclonal
预测反应	
应用	WB
推荐浓度	WB: 1:200 - 1:2000
理论分子量	70kDa
实测分子量	75kDa
形式	Liquid
保存条件	Store at -20°C. Avoid freeze / thaw cycles. Buffer: PBS with 0.02% sodium azide,50% glycerol,pH7.3.
偶联物	Unconjugated
阳性对照	HeLa,Mouse liver
细胞定位	Nucleus
纯化	Affinity purification

抗原信息

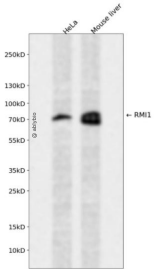
抗原信息	Recombinant fusion protein containing a sequence corresponding to amino acids 1-350 of human RMI1 (N P_079221.2).
序列	MNVTSIALRAETWLLAAWHVKVPPMWLEACINWIQEENNNVNSQAQMNKQVFEQWLLTDLRDLEHPLLPDGILEIPKGE LNGFYALQINSLVDVSPAYSQIQKLRGKNTTNDLVTAEAQVTPKPWEAKPSRMLMLQLTDGIVQIQGMEYQIPILHSDLP PGTKILYGNISFRLGVLLKPENVKVLGGEVDALLEEYAQEKVLARLIGEPDLVSVIPNNSNENIPRVTDVLDPALGPSDEEL LASLDENDEL TANNDTSSERCFTTGSSNTIPTRQSSFEPEFVISPRPKEEPSNLSIHVMDGELDDFSLEEALLLEETVQKEQ METKELQPLTFNRNADRSIE

靶点信息

研究背景	RMI1 is a component of protein complexes that limit DNA crossover formation via the dissolution of double Holliday junctions (Raynard et al., 2006 [PubMed 16595695]).[supplied by OMIM, Mar 2008]
基因ID	80010

基因名	RMI1
Swiss	Q9H9A7
别名	RMI1;BLAP75;C9orf76;FAAP75

产品验证



Western blot analysis of RMI1 expressed in HeLa, Mouse liver using RMI1 Rabbit pAb at 1:1000. Secondary antibody: HRP Goat Anti-Rabbit IgG (H+L) at 1:5000. Lysates/proteins: 30ug per lane. Blocking buffer: 5% non-fat dry milk in TBST. Detection: ECL Enhanced Kit. Exposure time: 120s.

实验步骤

访问官网浏览详情: www.ablybio.cn