

NAA50 Rabbit pAb

货号: **AYP17117**

产品信息

反应	Human,Mouse,Rat
宿主	Rabbit
克隆性	Polyclonal
预测反应	
应用	WB IHC IF/ICC
推荐浓度	WB: 1:200 - 1:2000 IHC: 1:50 - 1:200 IF/ICC: 1:50 - 1:200
理论分子量	9kDa/19kDa
实测分子量	19kDa
形式	Liquid
保存条件	Store at -20°C. Avoid freeze / thaw cycles. Buffer: PBS with 0.02% sodium azide,50% glycerol,pH7.3.
偶联物	Unconjugated
阳性对照	SKOV3,HL-60,293T,MCF7
细胞定位	Cytoplasm
纯化	Affinity purification

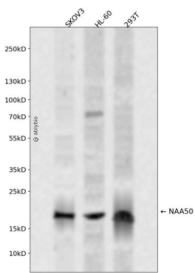
抗原信息

抗原信息	Recombinant fusion protein containing a sequence corresponding to amino acids 1-169 of human NAA50 (NP_079422.1).
序列	MKGSRIELGDVTPHNIKQLKRLNQVIFPVSYNDFYKDVLEVGE LAKLAYFNDAVGVCCRV DHSQNQKRLYIMTLGCLAP YRRLGIGTKMLNHVLNICEKDGTFDNIYLVH VQISNESAI DFYRKFGEI IETKKNYKRIEPADAHVLQKNLKVPSGQNADVQ KTDN

靶点信息

研究背景	N-alpha-acetyltransferase that acetylates the N-terminus of proteins that retain their initiating methionine. Has a broad substrate specificity: able to acetylate the initiator methionine of most peptides, except for those with a proline in second position. Also displays N-epsilon-acetyltransferase activity by mediating acetylation of the side chain of specific lysines on proteins. Autoacetylates in vivo. The relevance of N-epsilon-acetyltransferase activity is however unclear: able to acetylate H4 in vitro, but this result has not been confirmed in vivo. Component of N-alpha-acetyltransferase complexes containing NAA10 and NAA15, which has N-alpha-acetyltransferase activity. Does not influence the acetyltransferase activity of NAA10. However, it negatively regulates the N-alpha-acetyltransferase activity of the N-terminal acetyltransferase A complex (also called the NatA complex). The multiprotein complexes probably constitute the major contributor for N-terminal acetylation at the ribosome exit tunnel, with NAA10 acetylating all amino termini that are devoid of methionine and NAA50 acetylating other peptides. Required for sister chromatid cohesion during mitosis by promoting binding of CDCA5/sororin to cohesin: may act by counteracting the function of NAA10.
基因ID	80218
基因名	NAA50
Swiss	Q9GZZ1
别名	NAA50;MAK3;NAT13;NAT13P;NAT5;NAT5P;SAN

产品验证



Western blot analysis of NAA50 expressed in SKOV3, HL-60, 293T using NAA50 Rabbit pAb at 1:1000. Secondary antibody: HRP Goat Anti-Rabbit IgG (H+L) at 1:5000. Lysates/proteins: 30ug per lane. Blocking buffer: 5% non-fat dry milk in TBST. Detection: ECL Enhanced Kit. Exposure time: 120s.

实验步骤

访问官网浏览详情: www.ablybio.cn