

NEDD1 Rabbit pAb

货号: **AYP17113**

产品信息

反应	Human,Mouse,Rat
宿主	Rabbit
克隆性	Polyclonal
预测反应	
应用	WB IF/ICC
推荐浓度	WB: 1:500 - 1:2000 IF/ICC: 1:50 - 1:200
理论分子量	62kDa/71kDa/72kDa
实测分子量	78kDa
形式	Liquid
保存条件	Store at -20°C. Avoid freeze / thaw cycles. Buffer: PBS with 0.02% sodium azide,50% glycerol,pH7.3.
偶联物	Unconjugated
阳性对照	HeLa,293T,Jurkat,mouse brain,rat brain
细胞定位	Cytoplasm,centrosome,cytoskeleton,microtubule organizing center
纯化	Affinity purification

抗原信息

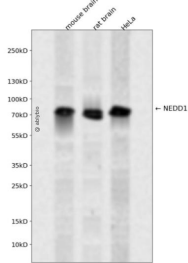
抗原信息	Recombinant fusion protein containing a sequence corresponding to amino acids 411-660 of human NEDD1 (NP_690869.1).
序列	SPIRDDAVVNKGSDESIGKGDGDFLPQLNSVFPPRKNPVTSSVTLHSSPLNVFMGSPGKEENENRDLTAESKKIYMGK QESKDSFKQLAKLVTSGAESGNLNTSPSSNQTRNSEKFEKPENEIEAQLICEPPINGSSTPNPKIASSVTAGVASSLSEKIAD SIGNNRQNAPLTSIQIRFIQNMIQETLDDFREACHRDIVNLQVEMIKQFHMQLNEMHSLLERYSVNEGLVAEIERLREENKRL RAHF

靶点信息

研究背景	Required for mitosis progression. Promotes the nucleation of microtubules from the spindle.
基因ID	121441

基因名	NEDD1
Swiss	Q8NHV4
别名	NEDD1;GCP-WD;TUBGCP7

产品验证



Western blot analysis of NEDD1 expressed in mouse brain, rat brain, HeLa using NEDD1 Rabbit pAb at 1:1000. Secondary antibody: HRP Goat Anti-Rabbit IgG (H+L) at 1:5000. Lysates/proteins: 30ug per lane. Blocking buffer: 5% non-fat dry milk in TBST. Detection: ECL Enhanced Kit. Exposure time: 120s.

实验步骤

访问官网浏览详情: www.ablybio.cn