

# RASSF6 Rabbit pAb

货号: AYP17106

## 产品信息

反应	Mouse,Rat
宿主	Rabbit
克隆性	Polyclonal
预测反应	
应用	WB
推荐浓度	<b>WB:</b> 1:500 - 1:2000
理论分子量	35kDa/37kDa/39kDa/43kDa
实测分子量	54kDa
形式	Liquid
保存条件	Store at -20°C. Avoid freeze / thaw cycles. Buffer: PBS with 0.02% sodium azide,50% glycerol,pH7.3.
偶联物	Unconjugated
阳性对照	Mouse intestine,Rat kidney
细胞定位	
纯化	Affinity purification

## 抗原信息

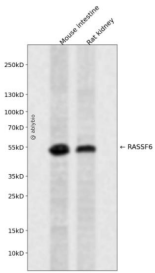
抗原信息	Recombinant fusion protein containing a sequence corresponding to amino acids 1-303 of human RASSF6 (NP_001257320.1).
序列	MTMMAHQYPSWIFINEKTFITREQLNSLLKTYNIFYENQKNLHILYGETEDGKLIVEGMLDIFWGVKRPQLKIQDEKPFSSFT SMKSSDVFSKGMTRWGEFDDLYRISELDRTQIPMSEKRNSQEDYLSYHSNTLKPFAKDEPDSPVLYRTMSEALVRKR MKPLMMDRKERQKNRASINGHFYNHEIENSPQDFALHIIFATGEQRRLKKTDIPLLQRLQGPSEKNARIFLMDKDAAEISS DVAQYINFHFSLLESILQRLNNEEKREIQRIVTKFNKEKAILKCLQNKLVIKTETTV

## 靶点信息

研究背景	This gene encodes a member of the Ras-association domain family (RASSF). Members of this family form the core of a highly conserved tumor suppressor network, the Salvador-Warts-Hippo (SWH) pathway. The protein encoded by this gene is a Ras effector protein that induces apoptosis. A genomic region containing this gene has been linked to susceptibility to viral bronchiolitis. Alternative splicing results in multiple transcript variants and protein isoforms.
------	-----------------------------------------------------------------------------------------------------------------------------------------------------------------------------------------------------------------------------------------------------------------------------------------------------------------------------------------------------------------------------------------------------------------------------------------------------------------------------

基因ID	166824
基因名	RASSF6
Swiss	Q6ZTQ3
别名	RASSF6

## 产品验证



Western blot analysis of RASSF6 expressed in Mouse intestine,Rat kidney using RASSF6 Rabbit pAb at 1:1 000. Secondary antibody: HRP Goat Anti-Rabbit IgG (H+L) at 1:5000. Lysates/proteins: 30ug per lane. Blo cking buffer: 5% non-fat dry milk in TBST. Detection: ECL Enhanced Kit. Exposure time: 120s.

## 实验步骤

访问官网浏览详情: [www.ablybio.cn](http://www.ablybio.cn)