

CISD2 Rabbit pAb

货号: **AYP17103**

产品信息

反应	Human,Mouse,Rat
宿主	Rabbit
克隆性	Polyclonal
预测反应	
应用	WB IHC
推荐浓度	WB: 1:500 - 1:2000 IHC: 1:100 - 1:200
理论分子量	15kDa
实测分子量	15kDa
形式	Liquid
保存条件	Store at -20°C. Avoid freeze / thaw cycles. Buffer: PBS with 0.02% sodium azide,50% glycerol,pH7.3.
偶联物	Unconjugated
阳性对照	HT-29,293T,A-549,SH-SY5Y,K-562,Rat lung
细胞定位	Endoplasmic reticulum membrane,Mitochondrion outer membrane,Single-pass membrane protein
纯化	Affinity purification

抗原信息

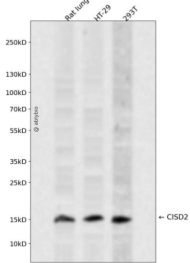
抗原信息	Recombinant fusion protein containing a sequence corresponding to amino acids 61-135 of human CISD2 (NP_001008389.1).
序列	PKKKQKDSLINLKIQKENPKVVNEINIEDLCLTKAAYCRCWRSKTFPACDGSNKHNELTGDNVGPLLKKKEV

靶点信息

研究背景	The protein encoded by this gene is a zinc finger protein that localizes to the endoplasmic reticulum. The encoded protein binds an iron/sulfur cluster and may be involved in calcium homeostasis. Defects in this gene are a cause of Wolfram syndrome 2.
基因ID	493856

基因名	CISD2
Swiss	Q8N5K1
别名	CISD2;ERIS;Miner1;NAF-1;WFS2;ZCD2

产品验证



Western blot analysis of CISD2 expressed in Rat lung, HT-29, 293T using CISD2 Rabbit pAb at 1:1000. Secondary antibody: HRP Goat Anti-Rabbit IgG (H+L) at 1:5000. Lysates/proteins: 30ug per lane. Blocking buffer: 5% non-fat dry milk in TBST. Detection: ECL Enhanced Kit. Exposure time: 120s.

实验步骤

访问官网浏览详情: www.ablybio.cn